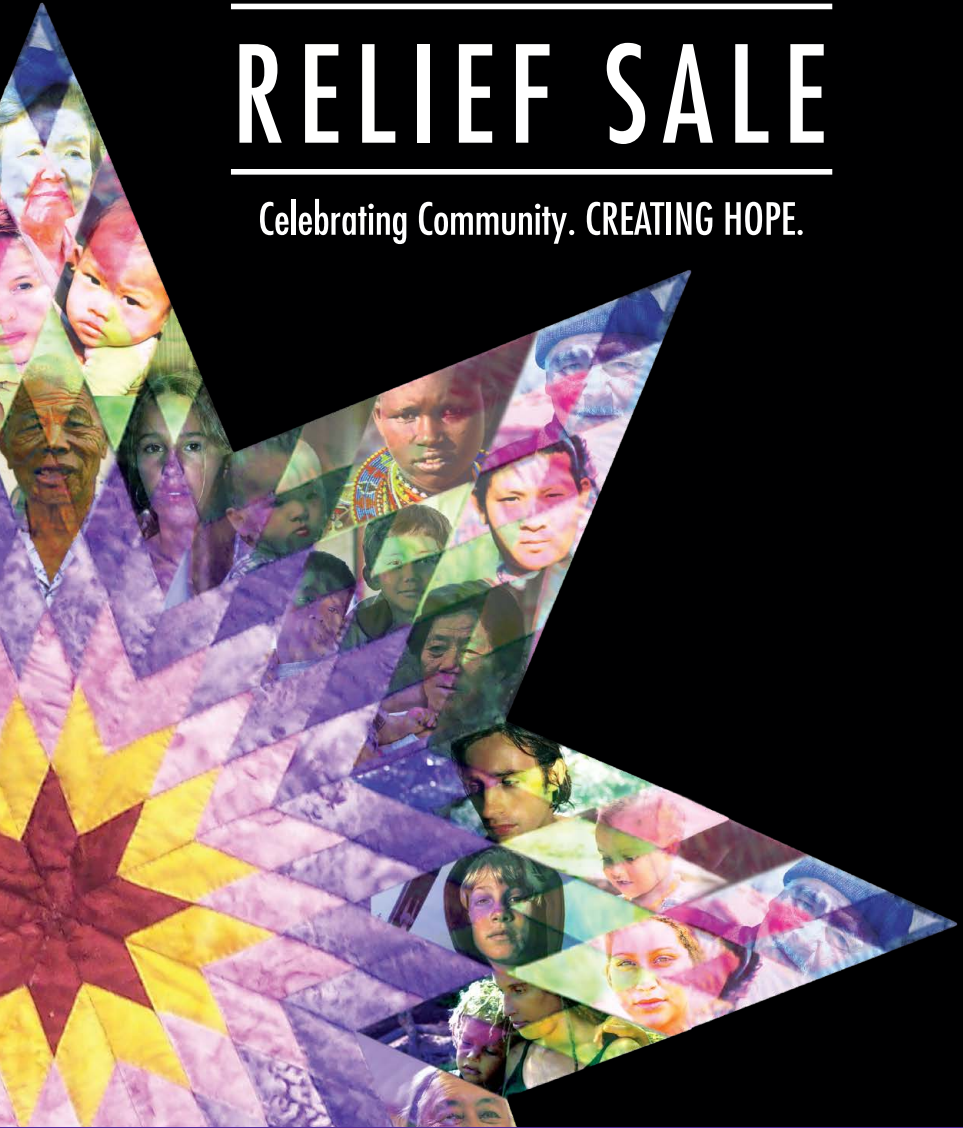


66th Annual

P E N N S Y L V A N I A

RELIEF SALE

Celebrating Community. CREATING HOPE.



APRIL 1 & 2, 2022 | PA Farm Show Complex • Harrisburg

Sale proceeds benefit the
worldwide relief efforts of MCC.



**Mennonite
Central
Committee**

INSURANCE DRIVEN *by* *Integrity*



**Lehman Insurance
Agency, Inc.**

www.lehmanins.com



EPHRATA

1020 Sharp Ave. Ephrata, PA
717-733-2050

NEW HOLLAND

650 East Main St., New Holland, PA
610-286-0956

MT. JOY

968 East Main St., Mount Joy, PA
717-653-2990

AUTO | HOME | BUSINESS | FARM | CHURCH

Martin's[®] *Famous*

POTATO ROLLS AND BREAD



© Famous Pastry Shoppe, Inc.®

potatorolls.com



Working together for good



Everence® is pleased to support the Pennsylvania Relief Sale and its mission of helping others – here at home and around the world. It's one way we're **doing better together.**

Belleville

4417 E. Main St.
717-935-0025

Ephrata*

1021 Sharp Ave.
717-733-9414

Mount Joy*

960 E. Main St.
717-653-6662

Lancaster*

2160 Lincoln Hwy E.
717-394-0769

Mechanicsburg*

1 Kacey Court, Ste. 201
717-697-1728

Chambersburg*

1331 S. 7th St., Ste. 203
717-251-2131

everence.com/centralpenn



Everence®

Banking | Investing | Retirement | Financial Planning | Insurance | Charitable Giving

**Securities offered through Concourse Financial Group Securities, Inc. (CFG), Member FINRA/SIPC. Advisory services offered through Concourse Financial Group Advisors, a DBA for CFG, a Registered Investment Advisor. Investments and other products are not NCUA or otherwise federally insured, may involve loss of principal and have no credit union guarantee.*

Products and services offered through Everence Trust Company and other Everence entities are independent of and are not guaranteed or endorsed by Concourse Financial Group Securities, or its affiliates.

TABLE OF CONTENTS

Schedule of Events.....	4, 5
Terms of Sale, Service Animals Policy.....	6
Donation Bids	7
Country Auction & Coin Auction.....	8
Centennial Pitcher.....	9
Children’s Activities	10
My Coins Count	11
Silent Auction.....	12-13
Hand-Held Cultivator	14
3-D Art: <i>New Beginnings</i>	15
A Look Back: Working Together	16-17
Quilt Auction	18-20
Highlights from Quilt Previews.....	21
QUILT LISTING	
Friday (In-Person and Online Bidding)	22-27
Saturday (In-Person and Online Bidding).....	29-55
Saturday (In-Person Bidding Only)	56-60
Location Map	34-35
MCC: Ukraine Response.....	38-39
MCC: Buzzing and Laughter.....	50-51
Craft Stand.....	62
Quilter’s Attic.....	63
MCC: Relief Kits Reach Haiti.....	64-65
Supporters Listing.....	66
Board of Directors	68





Welcome to the 66th Annual Pennsylvania Relief Sale!

We are thrilled that this event is back - it is time once again for the Pennsylvania Relief Sale! It is with joy that we carry on the tradition that began on a Berks County farm by the Zion Mennonite Church congregation in 1957. With more than seven decades of annual activities, the Pennsylvania Relief Sale has grown from a few committed volunteers to hundreds of volunteers throughout the state.

When the COVID-19 pandemic halted the relief sale in Spring 2020, we weren't quite sure what the next move would be. The sale had always been an in-person event drawing lots of people to an indoor space. Clearly, we had to pivot.

As we gather this weekend for the first time in two years, I must express my deepest gratitude to the people who make up the Pennsylvania Relief Sale Board of Directors. Their commitment to MCC and willingness to take on new tasks and fundraising initiatives was nothing short of inspiring. Our monthly Board meetings took place on Zoom. Our auctions and fundraising events went virtual and moved online. And we kept raising money for MCC. Take a look at the article on pages 16-17 to learn more!

These funds support MCC's global efforts in peace building, food security, clean water initiatives, children's education, disaster response, refugee support, and so much more. We give thanks to MCC for their commitment as they respond to basic human needs and work for peace and justice in the name of Christ.

Sprinkled throughout this catalog are stories highlighting MCC's great work around the globe. I urge you: Take a moment to read these stories and learn more about MCC's impact. These stories are why we are here.

Our goal is to create a festive, family-friendly event that Celebrates Community and Creates Hope. We hope you enjoy your time spent with us.

Highlights from the Sale:

- Friday Night Entertainment: Weaverland Mennonite Conference Youth Choir
- Friday Night is FAMILY NIGHT! Join us for children's activities, stories, and more
- Country & Coin Auctions are not to be missed with in-person bidding at the sale
- Quilt Auction has a new twist! Bidding will occur both in-person and online
- Silent Auction bidding will take place online only with bidding stations at the sale
- My Coins Count donations support MCC's Food Programs
- Great Food: Strawberry pies, homemade ice cream, soups, donuts, subs, & more

Thanks for joining us! It feels great to be back doing what we love - raising money for MCC. Whether this is your first sale or one of many, Welcome! You are part of a legacy of generosity.

On behalf of the Pennsylvania Relief Sale Board of Directors, we thank you!

Blessings,
Kenneth M. Martin
Chairman, Pennsylvania Relief Sale

**See article on pages 16-17
to learn more!**

pareliefsale.org
info@pareliefsale.org

 Find us on
Facebook

717-208-4152

SCHEDULE OF EVENTS

FRIDAY, APRIL 1 | 4–9 pm

Food Stands	4–9 pm
My Coins Count	4–9 pm
Crafts & Goods for Sale	4–9 pm
Books • Crafts • Share-A-Meal • Ten Thousand Villages	
Quilter's Attic.....	4–9 pm
Quilt Preview (Location: Quilt Display Area).....	4–9 pm
Mennonite Central Committee	4–9 pm
Stop by the MCC Stand to visit with staff members and alumni friends	
Children's Activities	4–9 pm
Balloon Animals & Shapes • Play Area	
Stories From Around The World.....	5:30 pm
Children's Auction.....	6:30 pm
Silent Auction (Location: Silent Auction Area)	
Online Bidding.....	4–9 pm
Cash & Carry Items	4–9 pm
Quilt Auction (Location: County Auction Area)	6–7:30 pm
Entertainment (Location: Quilt Auction Area)	7:30 pm
Weaverland Mennonite Conference Youth Choir	

SAVE THE DATE!

**67th Pennsylvania Relief Sale
March 31–April 1, 2023**

SCHEDULE OF EVENTS

SATURDAY, APRIL 2 | 6:30 am–3 pm

Food Stands6:30 am–3 pm

My Coins Count7 am–3 pm

Crafts & Goods for Sale7 am–3 pm
Books • Crafts • Share-A-Meal • Ten Thousand Villages

Quilter's Attic8 am–3 pm

Mennonite Central Committee9 am–3 pm
Stop by the MCC Stand to visit with staff members and alumni friends

Children's Activities9 am–3 pm
Balloon Animals & Shapes • Play Area
Stories From Around The World 9:30 am
Children's Auction11 am
Variety Show: Sharing Your Talent 1:30 pm

Country Auction (Location: Country Auction Area) 8:45 am–3 pm
MCC Centennial Pitcher11 am
Furniture (indoor and outdoor)11 am
Donation Bids 12 pm
Fordson Tractor & Plow (replica) 12:30 pm
Specialty Items 12:30 pm

Coin Auction (Location: Hallway Area)9:30 am

Silent Auction (Location: Silent Auction Area)
Online Bidding8 am–1pm
Cash & Carry Items8 am–2 pm

Quilt Auction (Location: Quilt Auction Area)9 am–3 pm
A Loaf of Homemade Bread9 am
3-D Art: New Beginnings 12 pm
Donation Bids 12 pm
Hand-Held Cultivator 12 pm

Terms of Sale

The Pennsylvania Relief Sale accepts cash, check, Discover, Visa, and Mastercard. All goods and services are purchased “as is, where is” and are non-refundable. Goods sold at auctions may be subject to a reserve price at the sale’s discretion. All goods purchased must be paid for, picked up, and removed from the premise on the same day as purchased.

These terms of sale are subject to change.

If able, paying with cash or check avoids credit card fees charged to the Pennsylvania Relief Sale – that means more money in net proceeds that can be donated to Mennonite Central Committee (MCC).

Checks can be made payable and mailed to: PA Relief Sale
PO Box 416
Leola, PA 17540

Thank you for your support!

**Have a question? Comment?
Interested in volunteering or donating?**

CONTACT

info@pareliefsale.org

717.208.4152



Service Animals Policy

The Pennsylvania Relief Sale does not permit animals in any venue where sale or sale-related activities are conducted. There are two exceptions:

1. Service animals are permitted.
2. Emotional support dogs or cats are permitted if accompanied by appropriate documentation.

In either case, the owner will be held totally responsible for the behavior of the animal.

Donation Bids: Food Programs

More than 790 million people do not have enough to eat. It's not that there isn't enough food in the world, but disaster, poverty or unfair policies mean people can't access it.

MCC works with local partners around the world to make sure there is food for today, food for tomorrow and food for all.

- In situations of conflict or a disaster, MCC provides emergency food assistance including food packages, vouchers, and cash.
- MCC partners work with farmers on new techniques to improve soil health and increase yields.
- MCC advocates for government policies that allow everyone to access enough food.



Donation bids will be collected on Saturday, April 2, at 12 pm during both the Country Auction and Quilt Auction. The auctions will pause the selling of items and bids will be accepted as donations to MCC's Food Programs, specifically designated for Ukraine.

Help people around the world better feed their families by making a donation bid. Donate anytime during the sale by visiting the Registration Desk.

[Learn more | mcc.org/food](https://mcc.org/food)

Country Auction

Saturday, April 2 | 8:45 am – 3 pm

The Country Auction features a variety of goods and items. Items include miniature replicas, quilt racks, hand-painted items, glass, indoor and outdoor furniture, antiques, and collectibles.

Absentee or phone bids will be accepted on any Country Auction item. Contact: Steven Stoltzfus for details at 717-725-1383.



Wind Chimes



Fordson Tractor & Plow (replica)

**Plus many
more items!**



Kids Trike & Trailer



45"W
24"D
84"H

Louis XVI Treillage Armoire



Pony
Cycle

Exact color may vary.



Wooden Checkerboards by Warren Martin

Coin Auction

Saturday, April 2 | 9:30 am

The Coin Auction features rare, unusual, and collectible coins. Bidding begins at 9:30 am and runs through the end of the lots.

Attendees must register for a bidder number at the Registration Desk to bid on items at the Country and Coin Auctions.



Bid on Centennial Pitcher



The North American Relief Sale Board commissioned a potter, Mark Goertzen of Goshen, Indiana, to create water pitchers to be sold at Relief Sales in honor of the 100th anniversary of Mennonite Central Committee (MCC): 1920 - 2020.

The intent was to call attention to the value of life-giving water - an appropriate symbol to celebrate MCC's work over its 100 years of existence.

"Though some of my pieces reside on display in galleries, my work is made to be used and to aid in making living, in itself, a work of art," reads a quote on Mark's website.

Mark created 40 pitchers (one for each Relief Sale in the United States and Canada) with the same design, seal, and in a coordinating palette of colors. This is the final available pitcher out of the 40 that were created.

**The Centennial Pitcher will be sold on
Saturday, April 2, at 11 am at the Country Auction.**



**Learn more about
Mark Goertzen:
goertzenpottery.com**

Children's Activities

Fun activities for children take place throughout the two-day sale with many things to do:

- Playing & Exploring in the Children's Area
- Listening to stories from Around the World
- Joining the Fun at the Variety Show: Sharing Your Talent
- Taking home a twisted balloon creation
- Eating donuts, ice cream, and delicious food from around the sale



CHILDREN'S AUCTIONS

Children have the opportunity to bid on toys, books, games, and other items. An adult must accompany children to receive a bidding number and remain in the vicinity during the auction. Auction items are available on the table for preview prior to the start of the auction each day.

SCHEDULE OF EVENTS

FRIDAY, APRIL 1

- | | |
|---------|-------------------------------|
| 4–9 pm | Children's Activities open |
| 5:30 pm | Stories from Around The World |
| 6:30 pm | Children's Auction |

SATURDAY, APRIL 2

- | | |
|-----------|--|
| 9 am–3 pm | Children's Activities open |
| 9:30 am | Stories from Around The World |
| 11 am | Children's Auction |
| 1:30 pm | Variety Show: Sharing your talent
Children are invited to perform! It could be reciting poetry, playing an instrument, singing, telling a joke, jumping rope, juggling, doing a magic trick, whistling, or just acting silly! |



*All proceeds from the Children's Activities and Auctions will be donated to MCC's Food Programs, which help people around the world better feed their families. **Learn more at mcc.org/food***

My Coins Count

Mennonite and Brethren in Christ churches across North America participate in My Coins Count-- an intergenerational effort of collecting coins throughout the year to raise funds for Mennonite Central Committee (MCC).

The collected coins and other monetary donations are taken annually to Relief Sales for counting, sorting, and depositing. This fundraising effort powered by churches, groups, children, and families adds up to more than \$600,000 for MCC's work around the world.



Join the effort and donate coins or monetary gifts at the My Coins Count stand.



This year's donated coins will be designated for MCC's Food Programs. More than 790 million people do not have enough to eat. MCC works with local partners around the world to make sure there is food for today, food for tomorrow and food for all.

Learn more | mcc.org/get-involved/my-coins-count

Silent Auction

Friday, April 1 | 4–9 pm
Saturday, April 2 | 8 am–1 pm

The Silent Auction features unique items for sale. Items include artisan jewelry, certificates for experiences and events, paintings and pottery, photography, antiques, wood creations (including toys), handmade items, vintage linens, collectibles, and children's items.

NEW THIS YEAR!

The Silent Auction will occur ONLINE only with bidding stations and bidding buddies available at the sale to assist bidders.

View, bid, and buy Silent Auction items at:
auctria.events/April22SilentAuction

Bidding opened on March 26 and will conclude on Saturday, April 2 at 1 pm (ET).

How to participate in the Silent Auction's real-time ONLINE BIDDING:

- Download the **Auctria** app to your smart phone and register an account.
- Not sure how? Connect with a bidding buddy in the Silent Auction area. They have laptops and tablets available for bidding.
- Credit card information is required at the time of registration.
- You will receive bidding progress on your items via text updates.
- This bidding registration process IS SEPARATE from the other auctions at the Relief Sale.
- You must create an account with Auctria to bid on Silent Auction items.

Winning bidders may pick-up items at the Silent Auction area – most items will be pre-packaged and ready to go. Limited items will be out on display. **Items must be picked up by 2 pm on Saturday, April 2.** Winning bidders NOT present at the sale can designate one of three MRC locations to pick-up their items in late April: Chambersburg, Ephrata, or Harleysville. Due to limited staff – **shipping will not be offered.**

The Silent Auction will also feature Cash & Carry items available for immediate purchase. Items include hand-embroidery pieces, repurposed items, artwork, and more than 500+ Beanie Babies!

Silent Auction



Acrylic by Diane Stuckey



Mission-style Ash Tables (pair): 16" x 16" top and 27" tall



Sea Scape Wooden Carving: dolphin, turtles, star fish; walnut, mounted on drift wood



Ewer by Dennis Maust:
functional vessel,
18" x 10" x 7"



Gibson LG1 Sn 242709 (as is):
1948-1968 Scale 24 3/4" Body
Spruce top, mahogany back
and sides with Sunburst nitro-
cellulose finish. 19" long, 14 1/4"
wide, 4 1/2" deep

Transformation: Destruction to Production

RAW Tools partners with communities in an effort to repurpose weapons for productive lifelong purpose. The materials from the weapon are forged into new tools. Each weapon is connected to its new purpose, creating a story that will travel with the new tool.

This is exactly what connected Gary Lebo to RAW Tools when he purchased a hand-held cultivator at a MCC-affiliated auction in 2013. Gary was on his cell phone 117 miles away in Dillsburg, when the garden tool came up for bid. An auction volunteer on site placed bids for him.

It was not just any old garden tool. This cultivator was constructed from a handgun at a Philadelphia blacksmith workshop devoted to turning “swords into plowshares” and “spears into pruning hooks.” These visionary words are from the Biblical prophet, Isaiah.

The bidding began at \$300. It climbed to \$500, \$600, \$700. The final bid was for \$850 by Gary and his wife, Gloria. Another person added a \$150 donation to make the total \$1,000.

“I thought it was all over,” Lebo recounts, until he received a call from Kimberly Tucker, a friend from Dillsburg Brethren in Christ Church, who was at the auction. “She was scolding me (jokingly) for buying it out from under her.”

Kimberly had her eye on the tool because she “wanted to purchase it to use throughout the year at church as a symbol of peace—turning swords into plowshares.”

For several years, Gary and Gloria displayed the cultivator in their home and shared its story. It sparked many conversations among family, friends, and guests about peace and violence. Gary loved to garden, and he was co-owner of a wholesale flower business. To him, the cultivator was such a great symbol that encompassed his passions.

Sadly, in December 2019, Gary passed away from cancer.

In time, Gloria contacted Kimberly to give her the cultivator. In a final act to honor Gary, Kimberly contacted the PA Relief Sale to have the cultivator auctioned off at this year’s sale to raise money in Gary’s name for MCC.



**The Hand-Held Cultivator will be sold on
Saturday, April 2, at 12 pm at Quilt Auction.**

3-D Art: *New Beginnings*

War and famine left the people of southern Russia (today's Ukraine) in despair and without much hope in 1920. A plea for help was sent to church leaders in the United States. A letter in part read *“our food since last spring has been black tea and herring, and now dear friends this is gone. If you can't help then we will die of starvation.”*

A group of United States church leaders joined together to help them – thus creating Mennonite Central Committee (MCC).

After MCC met their immediate needs of food and clothing, there was still a need to help with agricultural needs such as equipment and seed. A Kansas farmer suggested sending tractors and plows to give them hope and a new beginning to help them. This piece of art, ***New Beginnings***, was created to show how MCC helps brothers and sisters around the world in the name of Christ.

Loraine Reiff was very excited to craft this art piece, ***New Beginnings***. Loraine and her husband Wilmer live in Lebanon County, Pennsylvania. Loraine was inspired by Abner and Aaron Zook's art. She finds it very rewarding to be able to



use her gifts and talents in creating art that can be sold and the money being used to bless others. Generous donors have covered the cost of the art so that the proceeds can go to MCC to provide ***New Beginnings*** to many more. Proceeds from the sale of this artwork will be designated to support MCC's Food Programs in Ukraine.

The framed piece of artwork is made out of wood, wire, and mostly covered with auto body mix and then painted. Dimensions are 29 1/2" H X 48" W X 6" D.

**The 3-D Art: *New Beginnings* will be sold
Saturday, April 2, at 12 pm at the Quilt Auction.**

A LOOK BACK:

Let's start by **THANKING YOU** for being a friend of the Pennsylvania Relief Sale and a supporter of Mennonite Central Committee (MCC).

It's been two years since we've held an in-person Pennsylvania Relief Sale. But...that does not mean that we haven't been busy raising much needed funds for MCC and was very successful after not holding it in 2021!

Working Together since April 2020, we've found new ways to keep events and activities going during the COVID-19 pandemic to further the mission of the Pennsylvania Relief Sale: to assist MCC's programs in The Name of Christ.

We utilized technology to host several online Quilt Auctions, stream two virtual holiday concerts called *Singing Light*, and hold the Pennsylvania Relief Sale in April 2021 totally virtual - which included a live, broadcasted Quilt Auction and online Silent Auction as well as an online children's program.

Moving forward, we are continuing to use technology to expand the reach of our traditional in-person events to new audiences online - that's certainly been one of the lessons we've learned. We learned that we do not have to be *physically* together to have the *passion* to support MCC. Although, we are grateful to be back to this in-person event this weekend!

We added a Coin Auction with online bidding over the last two summers and included drive-thru-style food fundraisers. In the Fall of 2021, two new events - Quilter's Attic Sale and Quilter's Yard-Age Sale - took place and raised money for MCC. The Supper in the Park fundraiser in Sarasota, Fla., resumed in February 2022 and was very successful.



Working Together to Support MCC

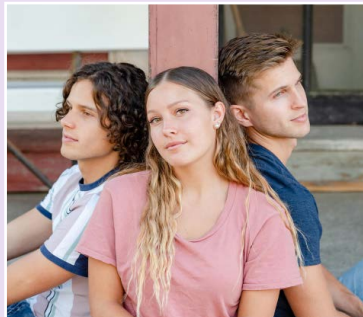
We sent fundraising appeal letters – and you responded! We asked you to turn in coins and donations that were collected for My Coins Count – and you did! We thank you for all of these gifts.

In total, thanks to these efforts and ALL OF YOU, the Pennsylvania Relief Sale has donated more than \$520,000 to MCC in the last two years.

Let's make this weekend count – for all the ways and for all the times we have counted on each other.

Thank You. God Bless You.

Thank you to these wonderful musicians for sharing their time and talent during our virtual holiday concerts!



Girl
Named
Tom



The Walking Roots Band



Steel Wheels

QUILT AUCTION

Friday, April 1 | 6–7:30 pm (Country Auction area)

Saturday, April 2 | 9 am–3pm (Quilt Auction area)

The Quilt Auction celebrates the work of numerous artists and needle workers – featuring the region’s finest handcrafted quilts, wall hangings, knotted comforters, and pre-print items.

Many hours have been invested by our quilters choosing patterns and fabric, piecing, appliqueing, embroidering, quilting, and finishing. These pieces can be used for warmth or displayed as works of art but one thing unites this collection of quilts – they have been created to benefit our sisters and brothers around the world.

Enjoy these beautifully-crafted gifts and we encourage you to bid generously. May this sale honor and glorify God as we offer the work of our hands to further His message of love and peace.

PA Relief Sale Quilt Committee

Anita Atilano, Marty Diederich, Sylvia Eberly, Angie Martin, Carolyn Martin, Grace Miller, Grace Sensenig, Joanne Stuebe, Sharon Swartzentruber, and many others. Thank you!

A special thanks to Brian and Susan Wadel and many others who helped to display the quilts in preparation for the auction.



#89 Sunflower Fields Forever, 90 x 102



#154 Dazzling Dresden, 108 x 120

QUILT CARE

Quilts today are generally made of washable fabric and batting. However, these three layers are held together with stitches of fine thread. **Proceed with care when cleaning to insure its longevity. Options include vacuuming, professional cleaning, or wet wash.**

If the quilt must be washed use lukewarm water and a small amount of mild detergent or wool wash, preferably in a bathtub. Avoid spinning, tumbling, or wringing of the quilt when removing excess water. The least amount of stress to the quilt and its stiches is to dry it in a horizontal position, flat on the lawn, on a sheet or other absorbent material, and out of direct sunlight. Machine drying is not advised; but if so, use the delicate setting at a low temperature. Old or vintage quilts require professional cleaning. Dry cleaning is not recommended.

When not in use, store the quilt in a cloth wrapping such as a pillowcase or sheet. Never leave a quilt in a plastic bag or tote, cardboard box, wooden chest, or directly on a wooden shelf. Rolling is best for a quilt. Another option is to fold the quilt on the bias. Folding fibers at an angle causes less crimping than folding them back on themselves. This can preserve the integrity of both the batting fibers and the threads in the fabric. Refold the quilt occasionally to avoid permanent crease lines and fabric tensions. Examine the quilt periodically for insect damage.



#164 Downtown, 93 x 104



#228 Diamond Jubilee, 100 x 112



#274 Autumn Splendor, 103 x 110

QUILT SIZING | QUILTS FOR 2023

REGARDING QUILT SIZES

Consider the following when deciding the size of a quilt to buy:

- Mattress size (newer mattresses are deeper)
- The amount of drop desired
- The desired amount of pillow tuck

The following chart may help you decide what size you want:

	Mattress Width	Mattress Length	Quilt Width	Quilt Length
SINGLE	39"	75"	74"	108"
DOUBLE	54"	75"	90"	108"
QUEEN	60"	80"	96"	112"
KING	76"	80"	108"	112"

**Save the Date
PA Relief Sale**

**March 31 &
April 1, 2023**

Quilt tops to be quilted for the 2023 PA Relief Sale need to be at the MCC Material Resources Center (MRC), 517 W. Trout Run Rd., Ephrata, before January 4, 2023. Finished quilts and comforters need to be of good quality and at the MRC by February 3, 2023. The PA Relief Sale Quilt Committee will determine the best way to sell each item.

Questions?

Contact: MRC Quilt Room Supervisor, 717-733-2847

HIGHLIGHTS FROM QUILT PREVIEWS

The Cumberland Valley Relief Center (CVRC) in Chambersburg hosted a Quilt Preview on January 20-22, 2022. The Quilters' Cupboard sold sewing notions, fabric, and related items. Attendees voted on their favorite quilts:

- Best in Show** (large quilt) #64 Harmony
- Runner-up** #175 Fassett Queen Flurry
- Best in Show** (small quilts/wall hangings) #147 Upsy Daisy
- Runner up** #82 Stairway to Heaven



#64 Harmony



#147 Upsy Daisy

The MCC Material Resources Center (MRC) in Ephrata hosted a Quilt Preview on March 3-5, 2022 which also included a Yard-age Sale of quilting items. Attendance passed 1,000+ visitors. Attendees voted on their favorite quilts and made donations to My Coins Count, which totaled \$547.

- Viewers' Choice** #154 Dazzling Dresden
- 1st Runner-Up** #143 Log Cabin Lone Star
- 2nd Runner-Up** #162 Kaleidoscope



#154 Dazzling Dresden



#143 Log Cabin Lone Star

QUILT AUCTION | FRIDAY EVENING

6–7:30 pm

Location: Country Auction Area

***There is a NEW TWIST to the Quilt Auction!
Bidding will take place both ONLINE and IN-PERSON.***

The Quilt Auction is a Simulcast Auction, which means that online bidders and in-person bidders will both be bidding on the item being auctioned. In-person bidders will register for a bidder number at the Registration Desk as in past sales. Online bidders can register online.

On Friday evening, the Simulcast Auction will include items numbered #1 to #60.

Questions? Stop and ask a Quilt Auction volunteer at the sale. Visit pareliefale.org for more information about online bidding and to view the online auction gallery, which includes photos of each item.

ABSENTEE BIDDING:

If you would like to bid but won't be present when that item is auctioned you may place an absentee bid. Stop and ask a Quilt Auction volunteer at the sale for an Absentee Bidder Card.

All items up for sale at the Quilt Auction are on display in the Quilt Display Area

(plastic gloves are provided and required if touching the quilts).

Successful bidders in-person will receive a tag with the quilt number.

After paying, bidders will be able to pick-up their item(s) at the Quilt Display Area. Successful online bidders will be notified and pick-up arrangements will be made.

Quilt measurements listed are in inches. Unless noted otherwise, all items are hand quilted.

- 1 _____ BIRD FRIENDS BY (hanging sleeve, signed & dated)
20 x 20 Pieced, Quilted & Donated by Anne Miller

- 2 _____ CLASSIC QUILT (streaks on back)
63 x 76 Pieced by Nancy Cordell, Quilted by Path Valley
Amish, Donated by Cumberland Valley Relief Center

- 3 _____ DOUBLE WEDDING RING (spots)
56 x 73 Pieced by a Friend of Cumberland Valley Relief
Center, Quilted by Path Valley Amish, Donated by
Cumberland Valley Relief Center

- 4 _____ CANDLEWICKING (stitching lines showing)
63 x 95 Made by Nancy Cordell, Quilted by Path Valley
Amish, Donated by Cumberland Valley Relief Center
- 5 _____ PINWHEEL (discolored pieces)
70 x 88 Pieced by Genevieve Diller, Quilted by Path Valley
Amish, Donated by Cumberland Valley Relief Center
- 6 _____ DOGWOOD (spots on one patch, signed & dated)
84 x 100 Pieced, Embroidered, Quilted & Donated by
Allensville Mennonite Church
- 7 _____ WINTER WELCOME (spots on snowball, signed & dated)
35 x 48 Pieced & Appliqued by Donna Widney, Quilted by
Marie Eby, Donated by Cumberland Valley Relief
Center
- 8 _____ FLOWER BASKET PREPRINT (signed & dated)
33 x 35 Quilted by Fannie Frey, Donated by Cumberland
Valley Relief Center
- 9 _____ AUTUMN LEAVES (hanging sleeve)
19 x 19 Pieced by Doris Yoder, Quilted by Sue Ann Sarvis,
Donated by Cumberland Valley Relief Center
- 10 _____ BABY ANIMALS
32 x 42 Pieced & Quilted by Linda Breneman, Donated by
Cumberland Valley Relief Center
- 11 _____ CABIN IN THE WOODS (hanging sleeve)
29 x 29 Pieced & Quilted by Linda Breneman, Donated by
Cumberland Valley Relief Center
- 12 _____ TRIP AROUND THE WORLD (hanging tabs)
26 x 26 Pieced & Quilted by Anna S. Landis, Donated by
John L. & Doris Landis
- 13 _____ SUNBURST (hanging sleeve)
34 x 48 Pieced by Mary Lois Martin, Quilted by Thelma
Martin, Donated by Cumberland Valley Relief Center
- 14 _____ HAPPY HANKIES (hanging sleeve, spots on back)
39 x 54 Pre-printed patches with navy sashing, Quilted by
Nancy Cordell, Donated Cumberland Valley Relief
Center

- 15 _____ FANTASTIC FANS (machine quilted, signed & dated)
51 x 62 Pieced, Machine Quilted & Donated by Jackie Adema
- 16 _____ DAHLIA (signed & dated)
76 x 102 Pieced & Quilted by Joyce Weber Reinard, Donated by Joyce Busch
- 17 _____ INTERLOCKING ORCHIDS Quilt & 2 pillow cases (signed & dated)
80 x 80 Pieced by Nancy Cordell, Embroidered by Verna Eby, Quilted by Cora Horst, Donated by Cumberland Valley Relief Center
- 18 _____ KITTENS FOUR PATCH (signed & dated)
40 x 59 Pieced by a Friend of MCC, Quilted by Fannie Frey, Donated by Cumberland Valley Relief Center
- 19 _____ STARS (machine quilted)
19 x 19 Pieced, Machine Quilted by Linda Breneman, Donated by Cumberland Valley Relief Center
- 20 _____ HOURGLASS (hanging sleeve, signed & dated)
12 x 15 Pieced, Quilted & Donated by Linda Breneman
- 21 _____ OCTOBER LITTLE QUILT (hanging sleeve)
15 x 15 Pieced by the late Dorothy Crider, Quilted by Fannie Frey, Donated by Cumberland Valley Relief Center
- 22 _____ BACKYARD PALS (stains on the back, signed & dated)
36 x 42 Pieced by the late Dorothy Crider, Quilted by Marie Eby, Donated by Cumberland Valley Relief Center
- 23 _____ BASKETS (spots on front)
24 x 50 Pieced by the late Dorothy Crider, Quilted by Marie Eby, Donated by Cumberland Valley Relief Center
- 24 _____ SHAPES (machine quilted, signed & dated)
18 x 24 Pieced & Machine Quilted, Donated by Ava Neff
- 25 _____ SUNFLOWER (machine quilted)
53 x 69 Machine Quilted by Joyce Busch
- 26 _____ TEDDY BEAR LOVE CROSS STITCH (machine quilted)
34 x 42 Donated by Anna Lauver

- 27 _____ COMPASS ROSE
24 x 55 Pieced by Sandi Layton, Quilted by Fannie Frey,
Donated by Cumberland Valley Relief Center
- 28 _____ NINE PATCH (hanging sleeve)
18 x 18 Donated by Fran Fitz Kennedy, Quilted by Marie Eby
- 29 _____ TUMBLING BLOCKS VARIATION (some spots on front)
76 x 89 Pieced by Rachel Horst, Nancy Cordell, Quilted by
Path Valley Amish, Donated by Cumberland Valley
Relief Center
- 30 _____ INTERLOCKING STARS (machine quilted, signed & dated)
84 x 96 Quilt blocks purchased at Cumberland Valley Relief
Center, Pieced, Machine Quilted & Donated by
Laurel Cook, Embroidered by Verna Mae Eby
- 31 _____ ANTIQUE CRAZY QUILT (significant deterioration, hanging sleeve)
60 x 62 Donated by John Gehman
- 32 _____ GOODNIGHT BEAR PREPRINT (signed & dated)
34 x 44 Quilted by Thelma Martin, Donated by Cumberland
Valley Relief Center
- 33 _____ PURPLE FLORAL (small spots on front)
68 x 70 Embroidered & Donated by Ethel Clemons, Quilted
by Cora Horst
- 34 _____ IRISH CHAIN (spot on back, signed & dated)
59 x 83 Pieced & Donated by Ruth Lehman, Quilted by
Cumberland Valley Relief Center
- 35 _____ LUMINARY (small tuck on backing, signed & dated)
44 x 44 Pieced & Donated by Susie DeVos, Quilted by Nancy
Cordell
- 36 _____ DIAGONAL COMFORTER
60 x 80 Pieced by Grace Miller, Knotted by Marian Thomas,
Donated by Grace Miller
- 37 _____ BEIGE & BROWN (hanging sleeve, signed & dated)
28 x 29 Pieced & Donated by Doris Yoder, Quilted by Sue
Ann Sarvis
- 38 _____ CROWN OF THORNS VARIATION (signed & dated)
24 x 36 Pieced by Susan Fluharty, Quilted by Fannie Frey,
Donated by Cumberland Valley Relief Center

- 39 _____ PATCHWORK HEARTS (signed & dated)
38 x 58 Embroidered by Verna Mae Eby, Quilted by Janet Crider, Donated by Cumberland Valley Relief Center
- 40 _____ BUTTERFLIES (spot on front, quilting lines are smudged, signed & dated)
43 x 43 Embroidered & Donated by Ethel Clemons, Quilted by Cora Horst
- 41 _____ SEW MANY SANTAS (hanging sleeve, signed & dated)
24 x 24 Pieced by Monna Gayman, Quilted by Fannie Frey, Donated by Cumberland Valley Relief Center
- 42 _____ KITTY KITTY PREPRINT (signed & dated)
33 x 50 Pieced by a Friend of Cumberland Valley Relief Center, Quilted by Janet Crider, Donated by Cumberland Valley Relief Center
- 43 _____ HAPPY CATS PREPRINT (hanging sleeve, signed & dated)
29 x 50 Donated by a Friend of Cumberland Valley Relief Center, Quilted by Janet Crider
- 44 _____ BEAR & BUNNY (spots on front, signed & dated)
40 x 60 Embroidered by Ethel Clemons, Quilted by Nancy Cordell, Donated by Cumberland Valley Relief Center
- 45 _____ SAILBOAT
12 x 12 Donated by a Friend of Cumberland Valley Relief Center
- 46 _____ BUTTERFLY (preprint)
12 x 15 Donated by a Friend of Cumberland Valley Relief Center
- 47 _____ HOPSCOTCH (signed & dated)
15 x 35 Pieced & Donated by Susie DeVos, Quilted by Marie Eby
- 48 _____ PLAYDATE (signed & dated)
19 x 21 Pieced & Donated by Susie DeVos, Quilted by Thelma Martin
- 49 _____ TREES (spot on back, signed & dated)
16 x 16 Pieced, Quilted & Donated by Ann Grapes

- 50 _____ SMALL STAR (preprint, hanging sleeve, signed & dated)
12 x 12 Quilted by Sue Ann Sarvis, Donated by Cumberland
Valley Relief Center
- 51 _____ MY HOUSE (hanging sleeve, signed & dated)
12 x 12 Pieced & Appliqued by a Friend, Quilted by Sue Ann
Sarvis, Donated by Cumberland Valley Relief Center
- 52 _____ APPLE TREE (hanging sleeve)
13 x 15 Pieced, Appliqued & Quilted by Anne Duvall,
Donated by Cumberland Valley Relief Center
- 53 _____ JUST DUCKY (machine quilted)
50 x 50 Pieced, Machine Quilted & Donated by Laurel Cook
- 54 _____ NINE PATCH
76 x 96 Quilted & Donated by Maple Grove Sewing Circle,
Atglen, PA
- 55 _____ PATCHWORK COMFORTER
60 x 80 Pieced by Grace Miller & Alice Miller, Knotted by
Marian Thomas, Donated by Grace Miller, Flannel
backing
- 56 _____ OUT OF THE BOX (signed & dated)
43 x 43 Pieced by Karen Manderson, Quilted by Marie Eby,
Donated by Cumberland Valley Relief Center
- 57 _____ DOUBLE WEDDING RING (quilting lines smudged, signed & dated)
70 x 102 Pieced by Nancy Cordell, Embroidered by Verna
Mae Eby, Quilted by Cora Horst, Donated by
Cumberland Valley Relief Center
- 58 _____ LOG CABIN (hanging sleeve, machine quilted)
20 x 20 Machine Quilted, Donated by a Friend of
Cumberland Valley Relief Center
- 59 _____ ROSE GARDEN (signed & dated)
82 x 104 Pieced by the late Dorothy Crider, Embroidered by
Louise Hunsecker, Quilted by Cora Horst, Donated
by Cumberland Valley Relief Center
- 60 _____ DOUBLE IRISH CHAIN (spot on front, signed & dated)
84 x 103 Pieced by a Friend of Cumberland Valley Relief
Center, Quilted by Cora Horst, Donated by
Cumberland Valley Relief Center



Care & Share
THRIFT SHOPPES

Souderton Center • 783 Rt 113, Souderton PA

ONE
PURCHASE
— CAN MAKE A —
BIG DIFFERENCE

Spend the day with us

Shop: Mon. — Thurs. & Sat. 9-5; Fri. 9-8

careandshareshoppes.org
215-723-0315

FARMER BOY[®]

Your Best in Value & Customer Support



Agricultural & Livestock Buildings & Supplies
Dairy • Poultry • Swine

24 Hour Service & Installation Available

(800) 845-3374

www.FarmerBoyAg.com

50 West Stoever Avenue Myerstown, PA

QUILT AUCTION | SATURDAY

9–10 am | In-Person Bidding | Quilts #500-554 (Pg. 56-60)

10 am–3 pm | Online & In-Person Bidding | Quilts #61-275

(Pg. 29-55)

Location: Quilt Auction Area

***There is a NEW TWIST to the Quilt Auction!
Bidding will take place both ONLINE and IN-PERSON.***

The Quilt Auction is a Simulcast Auction, which means that online bidders and in-person bidders will both be bidding on the item being auctioned. In-person bidders will register for a bidder number at the Registration Desk as in past sales. Online bidders can register online.

On Saturday, in-person bidding only on items #500 to 554 and the Simulcast Auction will include items numbered #61 to #275.

Questions? Stop and ask a Quilt Auction volunteer at the sale. Visit parieliefsale.org for more information about online bidding and to view the online auction gallery, which includes photos each item.

ABSENTEE BIDDING:

If you would like to bid but won't be present when that item is auctioned you may place an absentee bid. Stop and ask a Quilt Auction volunteer at the sale for an Absentee Bidder Card.

All items up for sale at the Quilt Auction are on display in the Quilt Display Area (plastic gloves are provided and required if touching the quilts).

Successful bidders in-person will receive a tag with the quilt number. After paying, bidders will be able to pick-up their item(s) at the Quilt Display Area. Successful online bidders will be notified and pick-up arrangements will be made.

Quilt measurements listed are in inches. Unless noted otherwise, all items are hand quilted.

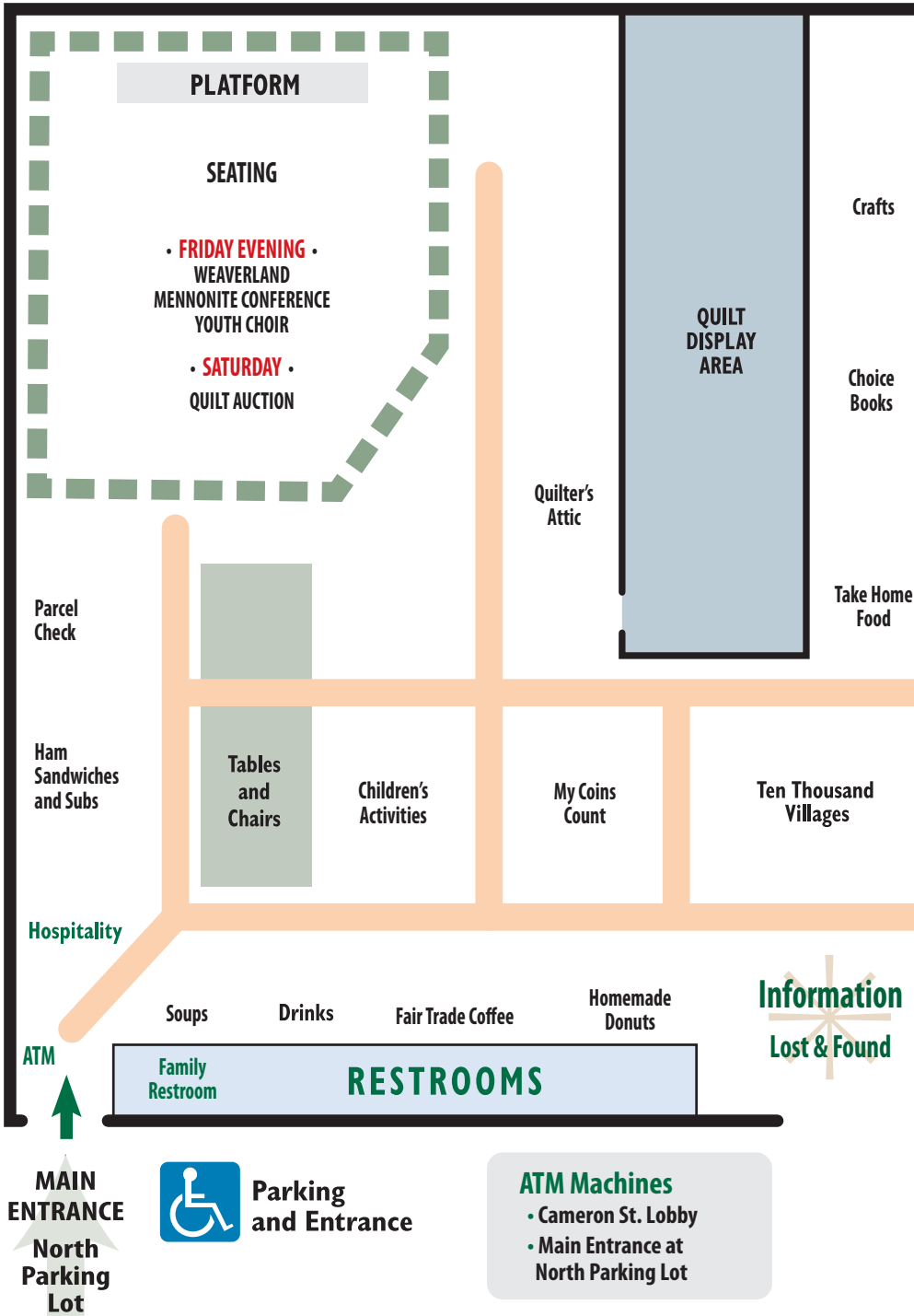
- 61 _____ OCEAN (machine quilted)
65 x 65 Pieced, Machine Quilted & Donated by Sharon Farley
- 62 _____ LOG CABIN
92 x 112 Pieced, Quilted & Donated by Lost Creek/Delaware
Sewing Circle

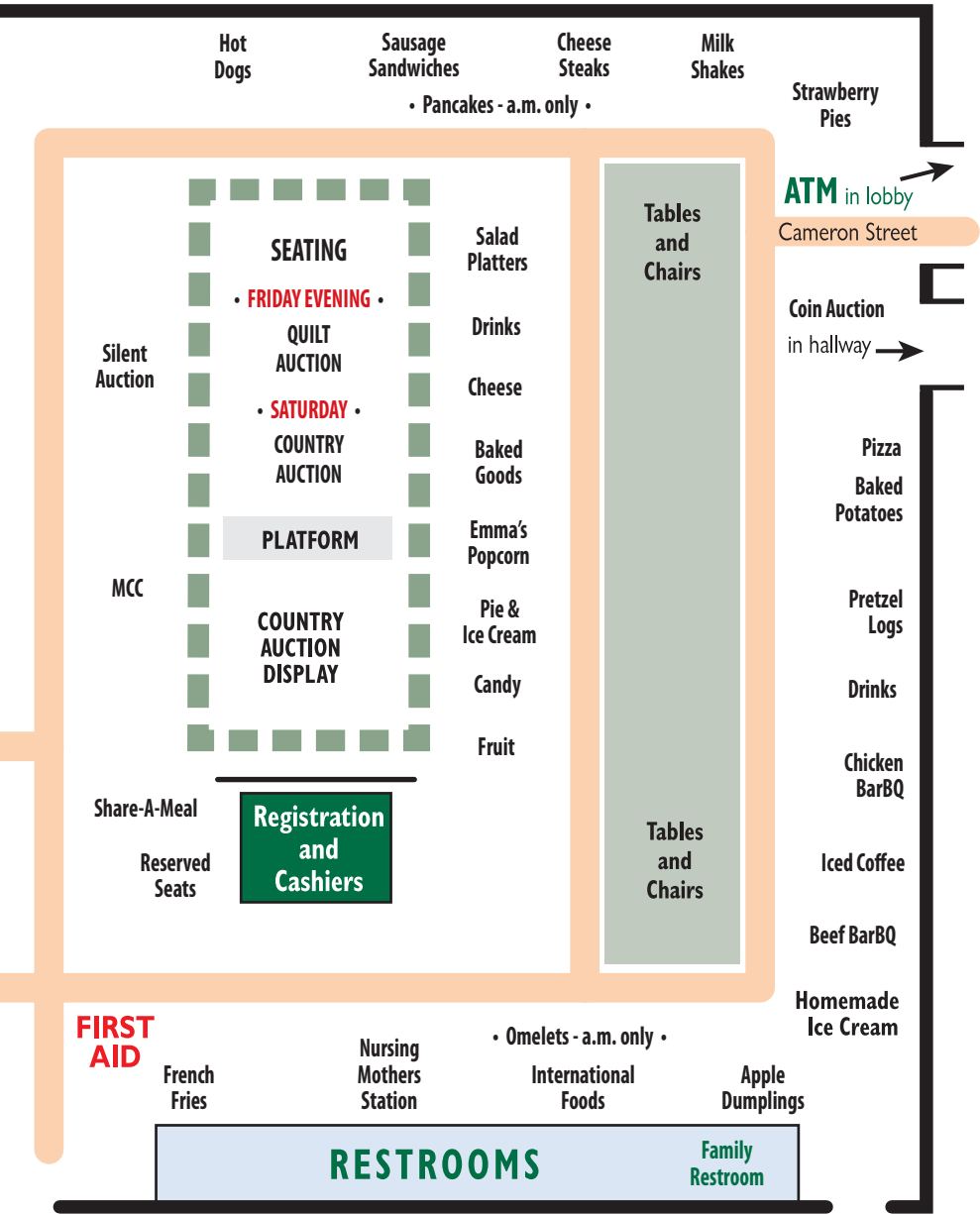
- 63 _____ CRAZY QUILT (hanging sleeve, signed & dated)
7 x 21 Pieced, Machine Embroidered, Machine Stitched &
Donated by Ruth Runion Slear
- 64 _____ HARMONY (signed & dated)
96 x 104 Pieced by Sandi Layton, Appliqued by Barbara
Parrish, Quilted by Cumberland Valley Relief Center,
Donated by Cumberland Valley Relief Center
- 65 _____ FALL WALL HANGING
40 x 40 Pieced by Betty Thias, Quilted & Donated by
Millwood Mennonite Sewing Circle
- 66 _____ PINWHEELS
60 x 70 Pieced by the late Dorothy Crider, Quilted by Marie
Eby, Donated by Cumberland Valley Relief Center
- 67 _____ CHINESE COINS (machine quilted, hanging sleeve)
17 x 19 Pieced & Donated by Kathy Mast, Machine Quilted
by Starla Landis
- 68 _____ SYMPHONY IN BLUE
98 x 105 Pieced & Donated by Sharon Showalter, Quilted by
Material Resources Center
- 69 _____ PUSSY WILLOWS (signed & dated)
39 x 58 Pieced & Appliqued by the late Jane Sanders,
Quilted by Susie DeVos, Donated by Cumberland
Valley Relief Center
- 70 _____ CRAZY PATCH (signed & dated)
33 x 66 Pieced & Donated by Ann Grapes, Quilted by Laura
Miller
- 71 _____ AMARYLLIS IN BATIK
27 x 34 Pieced Ellen Ressler, Appliqued by Helena Dyck,
Quilted by Material Resources Center
- 72 _____ SNOW DAY (signed & dated)
57 x 68 Pieced by Sandi Layton, Quilted & Donated by
Cumberland Valley Relief Center
- 73 _____ SANTA'S WINTER WAGON (hanging sleeve, signed & dated)
24 x 24 Pieced & Appliqued by Monna Gayman, Quilted by
Marie Eby, Donated by Cumberland Valley Relief
Center

- 74 _____ CHARMING CHRISTMAS (signed & dated)
26 x 26 Pieced & Donated by Susie DeVos, Quilted by Fannie Frey
- 75 _____ FEATHERED CHRISTMAS (hanging sleeve, signed & dated)
23 x 27 Pieced & Appliqued by Monna Gayman, Quilted by Marie Eby, Donated by Cumberland Valley Relief Center
- 76 _____ SOUND WAVES (signed & dated)
48 x 57 Pieced by the late Dorothy Crider, Quilted by Laura Miller, Donated by Cumberland Valley Relief Center
- 77 _____ CAKE MIX
76 x 88 Pieced by Susie DeVos, Quilted by Cora Horst, Donated by Cumberland Valley Relief Center
- 78 _____ SCRAPPY HOUSES
76 x 86 Pieced & Quilted by Rachel Smith, Donated by Cumberland Valley Relief Center
- 79 _____ POPPIES TABLE RUNNER
15 x 40 Appliqued by Helena Dueck, Quilted by Joan Tice, Donated by Material Resources Center
- 80 _____ MONARCH I (hanging sleeve, signed & dated)
13 x 15 Pieced & Quilted by Anne Duvall, Donated by Cumberland Valley Relief Center
- 81 _____ MONARCH II (hanging sleeve, signed & dated)
13 x 15 Pieced & Quilted by Anne Duvall, Donated by Cumberland Valley Relief Center
- 82 _____ STAIRWAY TO HEAVEN (machine quilted, signed & dated)
51 x 51 Pieced, Appliqued, Machine Quilted & Donated by Ann Grapes
- 83 _____ HOPE (signed & dated)
12 x 62 Pieced, Quilted & Donated by Ann Grapes
- 84 _____ SWEET SAILS (raw edge showing on front, signed & dated)
52 x 64 Pieced, Quilted & Donated by Shirley Stoltzfus
- 85 _____ AMISH WITH A TWIST IV (hanging sleeve, machine quilted)
83 x 96 Pieced by Mary Lou Whiteman, Machine Quilted with variegated thread by Lorac, Donor Lady Fingers Sewing Studio, Designed by Nancy Rink

- 97 _____ **AMISH DIAMOND**
29 x 29 Pieced & Donated by a Friend of Cumberland Valley Relief Center, Quilted by Susie DeVos
- 98 _____ **WHIRLWIND** (signed & dated)
68 x 72 Pieced by Suzanne Hockensmith & Nancy Cordell, Quilted & Donated by Cumberland Valley Relief Center
- 99 _____ **RED & GRAY FANS**
46 x 46 Donated by Joanne & Fred Stuebe
- 100 _____ **CHINESE COINS** (machine quilted, hanging sleeve, signed & dated)
17 x 17 Pieced & Donated by Kathy Mast, Machine Quilted by Starla Landis
- 101 _____ **VINTAGE TULIP SUMMER SPREAD**
68 x 68 Donated by Arlin & Janet Lapp
- 102 _____ **VINTAGE FEEDBAG NINE PATCH** (hanging sleeve, signed & dated)
17 x 17 Pieced, Quilted & Donated by Janet Runion Patton
- 103 _____ **VINTAGE NINE PATCH**
72 x 80 Donated by Reuzit on State
- 104 _____ **VINTAGE FLOWER BASKETS**
76 x 80 Quilt made by Irene Hertzler, Donated by Lois Sorviss
- 105 _____ **VINTAGE STAR SUMMER SPREAD**
82 x 82 Donated by Arlin & Janet Lapp
- 106 _____ **VINTAGE PINK TRIPLE IRISH CHAIN**
78 x 90 Recently Quilted & Donated by Erisman Sewing Circle
- 107 _____ **VINTAGE TUMBLING BLOCK COMFORTER**
72 x 78 Donated by a Friend of MCC
- 108 _____ **VINTAGE TRIPLE IRISH CHAIN**
66 x 90 Donated by Ann Grapes
- 109 _____ **VINTAGE FOUR PATCH**
78 x 82 Donated by a Friend of Cumberland Valley Relief Center
- 110 _____ **VINTAGE FEEDBAG PURPLE BOWTIES** (hanging sleeve, signed & dated)
11 x 11 Pieced, Quilted & Donated by Janet Runion Patton

*Shaded area indicates vintage quilts





LOCATION MAP - PA Relief Sale 2022

The \$10.00 parking fee is charged and collected by the Farm Show

- 111 _____ **VINTAGE CRAZY PATCH TOP**
77 x 84 Donated by Kathy & Marlin Grove
- 112 _____ **VINTAGE TRIP AROUND THE WORLD VARIATION TOP** (hand pieced)
72 x 74 Donated by Paul's Country Store
- 113 _____ **FEEDBAG CALICO CAT** (hanging sleeve, signed & dated)
9 x 10 Pieced, Quilted & Donated by Janet Runion Patton
- 114 _____ **VINTAGE NINE PATCH**
54 x 84 Donated by a Friend of Cumberland Valley Relief Center
- 115 _____ **VINTAGE DOUBLE WEDDING RING**
80 x 84 Donated by Grace Erb
- 116 _____ **TRIANGLES** (hanging sleeves)
41 x 58 Donated by Joanne & Fred Stuebe
- 117 _____ **TREE OF LIFE**
39 x 41 Donated by Stumptown Mennonite Church
- 118 _____ **CAT STACK** (hanging sleeve, signed & dated)
13 x 15 Pieced & Appliqued by Barbara Parrish, Quilted by Fannie Frey, Donated by Cumberland Valley Relief Center
- 119 _____ **QUICK TRIP**
98 x 105 Pieced & Donated by Mary Lou Whiteman, Quilted by Harleysville Material Resources Center, Designed by Eleanor Burns
- 120 _____ **ARROWHEAD** (signed & dated)
60 x 68 Pieced & Donated by Ruth Hoffeditz, Quilted by Cumberland Valley Relief Center
- 121 _____ **RAIL FENCE**
90 x 100 Pieced & Donated by Grace Miller, Quilted by Material Resources Center
- 122 _____ **KICK THE CAN** (hanging sleeve, signed & dated)
19 x 19 Pieced, Quilted & Donated by Brenda Eby
- 123 _____ **WHOLE CLOTH**
100 x 112 Quilted by Cumberland Valley Relief Center, Donated by Mary Lou Martin

*Shaded area indicates vintage quilts

- 124 _____ STAR FLOWER BASKETS (signed & dated)
48 x 48 Pieced & Appliqued by Barbara Parrish, Quilted by
Susie DeVos, Donated by Cumberland Valley Relief
Center
- 125 _____ FLYING GEESE (machine quilted, hanging sleeve)
16 x 19 Pieced, Quilted & Donated by Kathy Mast
- 126 _____ DEEP DIMENSIONS
76 x 94 Pieced by Arie King, Quilted by Ephrata Material
Resources Center
- 127 _____ FIRE & ICE (machine quilted, hanging sleeve, signed)
18 x 31 Pieced, Machine Quilted & Donated by Marion
Bergey
- 128 _____ REDWORK BASKETS (signed & dated)
36 x 48 Pieced, Quilted & Donated by Jackie Adema
- 129 _____ FLORAL SPLASH (with signed patches, signed & dated)
45 x 45 Pieced & Donated by Chambersburg Quilt Guild,
Quilted by Susie DeVos
- 130 _____ CARD TRICK
78 x 88 Quilted & Donated by Weaverland Anabaptist Faith
Community
- 131 _____ BARGELLO BEAUTY (signed & dated)
102 x 112 Donated & Quilted by Millport Mennonite Church
Sewing Circle
- 132 _____ TWILIGHT DAISES (hanging sleeve)
20 x 24 Pieced & Appliqued by Helena Dueck, Ellen Ressler,
Quilted by Joan Tice
- 133 _____ ROAD TO OKLAHOMA (small spots on back)
88 x 109 Pieced by the late Dorothy Crider, Quilted by Myrah
Sinko, Donated by Cumberland Valley Relief Center
- 134 _____ MICHIGAN (signed & dated)
68 x 68 Pieced & Donated by Susie DeVos, Quilted by
Cumberland Valley Relief Center
- 135 _____ BARGELLO JEWEL (crooked corner)
100 x 116 Donated by a Friend of MCC

Ukraine Emergency Response

What's going on?

In late February 2022, Russian military forces began an invasion of Ukraine by land, sea, and air. Missiles struck several major cities in Ukraine, including the capital city Kyiv. Casualties continue to grow as Russian soldiers enter the country. The conflict has been ongoing between Russia and Ukraine since late 2013, with Russia annexing the Crimea peninsula in March 2014.



What is MCC doing?

MCC has worked in Ukraine since our beginnings in 1920, opening soup kitchens to provide relief to thousands of starving families. Our current projects include relief, peace, health and education.

Since the beginning of the conflict in eastern Ukraine, MCC has worked with partners to assist internally displaced people (IDPs) and to build peace. The UNHCR reports there are some 1.8 million IDPs and conflict-affected people in Ukraine.

MCC staff outside their home context were evacuated from Ukraine. Staff still in Ukraine are carefully following security protocols and monitoring the rapidly evolving situation. MCC continues to maintain contact with partners and churches.

What you can do?

Pray: Please join us as we pray for peace in Ukraine

Give: MCC is accepting donations for a response in Ukraine. We are assessing the changing situation with local partners to determine the appropriate response. MCC's response will be focused on longer-term scale

up of existing programs that support vulnerable people and extending those services to internally displaced populations. It will likely include psychosocial support and trauma healing, temporary emergency housing, emergency

For those who want to donate emergency supplies, such as relief kits or comforters, to help vulnerable people in Ukraine - or in other places around the world - visit donate/mcc.org/ukraine or contact your local MCC office.

“Dear Brethren, help us.”

distributions of locally purchased emergency supplies such as blankets, and distribution of food packages. MCC also plans to resume shipments of material resources once the in-country conditions are stable enough to do so.

Advocate: Send a message to your member of Congress calling for peacebuilding efforts alongside development and humanitarian work. Ask for an emphasis on local peacebuilding as an alternative to foreign military interventions and operations.

Ukraine to MCC more than 100 years ago: “Dear Brethren, help us, we are perishing.”

In 1920, war, disease, and hunger were raging in southern Russia (present-day Ukraine). Mennonites there wrote to their sisters and brothers in the U.S. and Canada. “Dear Brethren, help us, we are perishing,” they pleaded.

By June 1922, Mennonites were serving 25,000 people in dozens of villages in southern Russia. “You saved us from starvation,” survivors from one village wrote. “Bread, in God’s name, bread!”

“It came almost miraculously from far away America, from friends they had never seen or known,” wrote an MCC volunteer about some of the first relief to arrive. “It was Love reaching out its strong hands across the water and plains, across oceans and continents.”

This was the formation of MCC. Today, MCC continues to share God’s love and compassion, still bringing together a broad coalition of Anabaptists and other like-minded folks to respond to people in need with ministries of disaster relief, sustainable community development, and justice and peacebuilding in more than 50 countries.



In 1923, Mennonites load wagons with emergency food, including tins of milk, in today’s Ukraine. MCC photo/D.R. Hoepfner

- 136 _____ STACK & WHACK
34 x 42 Pieced & Donated by Susie DeVos, Quilted by Marie Eby
- 137 _____ PENNY CANDY
13 x 49 Pieced & Donated by Susie DeVos, Quilted by
Thelma Martin
- 138 _____ HOME (machine quilted, signed & dated)
14 x 42 Pieced, Machine Appliqued, Machine Quilted &
Donated by Ann Grapes
- 139 _____ ALL A BUZZ
48 x 60 Pieced & Donated by Ellen Ressler, Quilted by Cindy
Kamide
- 140 _____ 16 PATCH
74 x 84 Donated by Bowmansville Sewing Circle
- 141 _____ FEED SACK FRENZY (signed & dated)
39 x 50 Pieced by Charlene Good, Quilted by Nancy Cordell,
Donated by Cumberland Valley Relief Center
- 142 _____ RAGGED STAR
84 x 106 Pieced, Quilted & Donated by Bowmansville Sewing
Circle
- 143 _____ LOG CABIN LONE STAR
100 x 110 Quilted & Donated by Conestoga/Hopewell Sewing
Circle
- 144 _____ WOODLAND BABES (signed & dated)
38 x 48 Pieced by Susie DeVos, Quilted by Marie Eby,
Donated by Cumberland Valley Relief Center
- 145 _____ MARBLES (signed & dated)
28 x 28 Pieced by a Friend of Cumberland Valley Relief
Center, Quilted & Donated by Susie DeVos
- 146 _____ A SQUARE DEAL
90 x 102 Pieced by a Friend of MCC, Quilted & Donated by
Mount Joy Mennonite Church Sewing Circle
- 147 _____ UPSY DAISY (signed & dated)
52 x 72 Pieced & Appliqued by Rachel Horst, Quilted by
Susie DeVos, Donated by Cumberland Valley Relief
Center

- 148 _____ STRIPS & BLOCKS
76 x 90 Pieced, Quilted & Donated by Bowmansville
Mennonite Sewing Circle
- 149 _____ FISHNET (spot on back, signed & dated)
48 x 62 Pieced by the late Dorothy Crider, Quilted by Susie
DeVos, Donated by Cumberland Valley Relief Center
- 150 _____ PEEK A BOO (signed & dated)
9 x 31 Pieced & Quilted by Karen Manderson, Donated by
Cumberland Valley Relief Center
- 151 _____ INTREPID TRAVELER
48 x 66 Pieced, Quilted & Donated by Susie DeVos
- 152 _____ LOG CABIN
98 x 124 Donated by Edward Lehman
- 153 _____ INTERNATIONAL SISTERS (small nip which has been stabilized, in
white background, signed & dated)
52 x 52 Pieced & Donated by Cindy Nissley, Quilted by
Material Resources Center
- 154 _____ DAZZLING DRESDEN
102 x 118 All Dresden Plates are constructed from the same
fabric as the quilt border, using the “stack & whack”
method. Pieced, Appliqued & Donated by Sharon
Showalter, Quilted by Material Resources Center
- 155 _____ WATERMELON (signed & dated)
18 x 44 Pieced & Appliqued by Monna Gayman, Quilted by
Marie Eby, Donated by Cumberland Valley Relief
Center
- 156 _____ CHOOSE PEACE (machine quilted, signed & dated)
66 x 80 Pieced & Donated by Trish Geesaman, Machine
Quilted by Thomas Wood
- 157 _____ OUT OF THE BOX
32 x 33 Pieced by Karen Manderson, Quilted by Marie Eby,
Donated by Cumberland Valley Relief Center
- 158 _____ AUTUMN SPLENDOR
36 x 34 Pieced, Quilted & Donated by Mary Jane Horning
- 159 _____ PEACOCK
102 x 118 Donated by Sue Shirk



Abundant Opportunities

Following God's call to creatively serve the diverse needs and interests of older adults by developing opportunities and collaborative relationships.



Learn about our Comforting Live-at-Home Services and Feel-at-Home Communities® for those age 55+

717.381.3500 | LandisCommunities.org



MARTIN INSURANCE AGENCY

Martin Insurance... Your Local Insurance Agent!



**Home • Auto • Farm • Church
Life • Business**

Liz Martin, CIC
717.872.7756
Martininsurance.com



- 160 _____ FAMILY, HOME, FRIENDS (hanging sleeve, signed & dated)
10 x 30 Pieced & Appliqued by Barbara Parrish, Quilted by
Fannie Frey, Donated by Cumberland Valley Relief
Center
- 161 _____ IT'S NOT A SQUARE (signed & dated)
48 x 72 Pieced by Sandi Layton, Quilted by Cora Horst,
Donated by Cumberland Valley Relief Center
- 162 _____ KALEIDOSCOPE
104 x 112 Donated by Hammercreek Mennonite Church
Sewing Circle
- 163 _____ BABY BEARS REDWORK (signed & dated)
34 x 34 Pieced by Joan Norcross, Quilted by Marie Eby,
Donated by Cumberland Valley Relief Center
- 164 _____ DOWNTOWN
93 x 104 Pieced & Donated by Mae Stoltzfus, Quilted by
Material Resources Center
- 165 _____ SPRINT OF THE GAZELLE (machine quilted, hanging sleeve, signed)
29 x 31 Pieced, Machine Quilted & Donated by Marion
Bergey
- 166 _____ TEAL LEMOYNE STAR
104 x 108 Pieced, Quilted & Donated by Ruth Rudy
- 167 _____ SQUARE IN A SQUARE
56 x 56 Pieced by Connie Lapp, Quilted by Material
Resources Center, Donated by Ruth Rudy
- 168 _____ STAR (hanging sleeve, signed & dated)
22 x 29 Pieced & Quilted by Rachel Horst, Donated by
Lorraine Eby
- 169 _____ TRANQUILITY (machine quilted)
70 x 70 Pieced by Carlene Brenize, Machine Quilted by
Laurel Cook, Donated by Karen Dangler, Carlene
Brenize & Laurel Cook
- 170 _____ SCRAPPY 4 PATCH
88 x 108 Pieced, Quilted & Donated by Bowmansville Sewing
Circle
- 171 _____ JESSIE'S COLLECTION (stitching lines showing, signed & dated)
48 x 48 Pieced, Embroidered & Donated by Ethel Clemons,
Quilted by Marie Eby

- 172 _____ CASCADE LOG CABIN (top edge uneven)
100 x 108 Donated by a Friend of MCC
- 173 _____ OHIO STAR SURPRISE (machine quilted, hanging sleeve)
47 x 47 Pieced & Donated by Ellen Ressler
- 174 _____ STACK & WHACK
96 x 110 Pieced by a Friend of MCC, Quilted & Donated by
Mount Joy Mennonite Church Sewing Circle
- 175 _____ FASSETT QUEEN FLURRY (signed & dated)
72 x 100 Pieced by Sandi Layton, Quilted by Cedar Grove
Mennonite Church WMSC, Donated by Cumberland
Valley Relief Center
- 176 _____ JAPANESE JIGSAW (signed & dated)
55 x 60 Pieced by Karen Manderson, Quilted by Susie
DeVos, Donated by Cumberland Valley Relief Center
- 177 _____ LABYRINTH
90 x 110 Donated by Millport Mennonite Church Sewing
Circle
- 178 _____ DOUBLE DUTCH STARS (signed & dated)
10 x 25 Pieced by Susie DeVos, Quilted by Fannie Frey,
Donated by Cumberland Valley Relief Center
- 179 _____ A STROLL IN PARIS (spots on back, signed & dated)
72 x 82 Pieced & Donated by Laura Miller, Quilted by
Cumberland Valley Relief Center
- 180 _____ PICK UP STICKS (signed & dated)
50 x 60 Pieced by the late Dorothy Crider, Quilted by Susie
DeVos, Donated by Cumberland Valley Relief Center
- 181 _____ HUNTER'S STAR (signed & dated)
74 x 106 Pieced, Quilted & Donated by Tina Minder
- 182 _____ A CROOKED MILE (signed & dated)
48 x 64 Pieced by Karen Manderson, Quilted by Laura Miller,
Donated by Cumberland Valley Relief Center
- 183 _____ TRIP AROUND THE WORLD
94 x 110 Pieced & Donated by Jewel Shivery, Quilted by
Maple Grove Mennonite Church Sewing Circle

- 184 _____ COZY CABIN CHRISTMAS (signed & dated)
42 x 42 Pieced by Barbara Parrish, Quilted by Marie Eby,
Donated by Cumberland Valley Relief Center
- 185 _____ AMISH CENTER DIAMOND (signed & dated)
23 x 23 Pieced by Barbara Parrish, Quilted by Nancy Cordell,
Donated by Cumberland Valley Relief Center
- 186 _____ SCRAPPY 25 SQUARE
92 x 104 Pieced & Donated by Grace Miller, Quilted by
Material Resources Center
- 187 _____ DIAMONDS
58 x 80 Donated by Conestoga/Hopewell Sewing Circle
- 188 _____ WATER LILIES (signed & dated)
23 x 26 Pieced by Sandi Layton, Quilted by Fannie Frey,
Donated by Cumberland Valley Relief Center
- 189 _____ GEMSTONES (signed & dated)
70 x 76 Pieced & Donated by Susie DeVos, Quilted by
Cumberland Valley Relief Center
- 190 _____ FORSYTHIA (machine quilted, hanging sleeve, signed)
16 x 40 Pieced, Machine Quilted & Donated by Marion
Bergey
- 191 _____ HAPPY GOLFER (hanging sleeve, signed & dated)
17 x 21 Pieced & Appliqued by Monna Gayman, Quilted by
Marie Eby, Donated by Cumberland Valley Relief
Center
- 192 _____ **VINTAGE** TWIN KITTENS (signed & dated)
18 x 21 Embroidered by a Friend of Cumberland Valley
Relief Center, Quilted by Janet Crider, Donated by
Cumberland Valley Relief Center
- 193 _____ **VINTAGE** FANS
68 x 68 Donated by a Friend of MCC
- 194 _____ **VINTAGE** EMBROIDERY
84 x 100 Quilt made by Irene Hertzler, Donated by Lois Sorvis
- 195 _____ **VINTAGE** FEEDBAG 100 SQUARES (hanging sleeve, signed & dated)
13 x 13 Pieced, Quilted & Donated by Janet Runion Patton

*Shaded area indicates vintage quilts



539 Stevens Road • Ephrata, PA 17522

(717) 738-3880

Fax (717) 738-7988

Garage doors
that exceed expectations.



717.656.0513

339 Monterey Rd,
Bird in Hand, PA 17505

On Track With Style

FARM FRESH • FAMILY FUN



OREGON DAIRY

2900 Oregon Pike

Lititz, PA 17543

OregonDairy.com

717-656-2856

Market • Restaurant • Bake Shoppe
Ice Cream Shoppe • Gift Shoppe

VISIT OUR WEBSITE AND CHECK OUT OUR

AMAZING MEAT BUNDLES!



14 South Tower Road

New Holland, PA 17557

(717) 354-4748

A Restaurant, a Store... Plus a Whole Lot More!

- All Conveniently Located Under One Roof:

Yoder's Country Market, Restaurant & Buffet, Banquet & Conference
Center, Gift Shop, Petal Perfect Flower Shop, Photo Lab, and Pharmacy

On the Web: <http://www.yoderscountrymarket.com>

- 196 _____ **VINTAGE** LONE STAR
74 x 74 Donated by Arlin & Janet Lapp
- 197 _____ **VINTAGE** FOUR PATCH
56 x 81 Donated by Arlin & Janet Lapp
- 198 _____ **VINTAGE** COLONIAL LADIES SUMMER SPREAD
61 x 81 Donated by a Friend of MCC
- 199 _____ FEEDBAG HOG WASH (hanging sleeve, signed & dated)
9 x 10 Pieced, Quilted & Donated by Janet Runion Patton
- 200 _____ **VINTAGE** CRAZY PATCH TOP
80 x 80 Pieced & Donated by Betty Melmick
- 201 _____ **VINTAGE** GRANDMOTHER'S FLOWER GARDEN (1940s)
80 x 88 Pieced & Quilted by the late Anna S. Landis,
Donated by Mary Ann Ogburn
- 202 _____ **VINTAGE** BASKETS
75 x 88 Quilted by Material Resources Center, Donated by a
Friend of MCC
- 203 _____ **VINTAGE** LOG CABIN TOP
69 x 69 Donated by a Friend of MCC
- 204 _____ **VINTAGE** OHIO STAR
84 x 92 Donated by a Friend of Cumberland Valley Relief
Center
- 205 _____ **VINTAGE** PINK DRESDEN PLATE (hanging sleeve, signed & dated)
16 x 16 Pieced, Quilted & Donated by Janet Runion Patton
- 206 _____ CRAZY PATCH RUNNER
19 x 76 Donated by Marion Bergey
- 207 _____ **VINTAGE** YO-YOS
76 x 84 Donated by a Friend of MCC
- 208 _____ OLIVIA'S ELEPHANT (hanging sleeve, signed & dated)
31 x 37 Pieced by Monna Gayman, Quilted by Marie Eby,
Donated by Cumberland Valley Relief Center
- 209 _____ POLKA DOT LOG CABIN (signed & dated)
76 x 76 Pieced by a Friend of Cumberland Valley Relief
Center, Quilted by Susie DeVos, Donated by
Cumberland Valley Relief Center

*Shaded area indicates vintage quilts

- 210 _____ MULTIFACETED (signed & dated)
60 x 74 Pieced by the late Dorothy Crider, Quilted by Laura Miller, Donated by Cumberland Valley Relief Center
- 211 _____ PINWHEEL (signed & dated)
84 x 100 Pieced by the late Dorothy Crider, Quilted by Cumberland Valley Relief Center, Donated by Erin Martin
- 212 _____ BELLA FLORA (signed & dated)
44 x 44 Pieced & Appliqued by the late Dorothy Crider, Quilted by Ronda Bomberger, Donated by Cumberland Valley Relief Center
- 213 _____ RETURN OF THE SWALLOWS (signed & dated)
96 x 114 Pieced by Sandi Layton, Quilted & Donated by Cumberland Valley Relief Center
- 214 _____ CABIN TRACKS (faded stripe on back, signed & dated)
60 x 80 Pieced by Sandi Layton, Quilted & Donated by Cumberland Valley Relief Center
- 215 _____ HAPPILY MARCHING ON (signed & dated)
16 x 19 Pieced & Donated by Susie DeVos, Quilted by Fannie Frey
- 216 _____ HOMESPUN CHARM (signed & dated)
86 x 104 Pieced by Rachel Horst, Quilted & Donated by Cumberland Valley Relief Center
- 217 _____ TRIP AROUND THE WORLD (signed & dated)
43 x 43 Pieced by Karen Manderson, Quilted by Fannie Frey, Donated by Cumberland Valley Relief Center
- 218 _____ FAN BLADES (signed & dated)
92 x 92 Pieced by Brenda Lehman, Quilted & Donated by Cumberland Valley Relief Center
- 219 _____ STACK OF FLOWER POTS (hanging sleeve, signed & dated)
6 x 22 Pieced & Machine Appliqued by Barbara Parrish, Quilted by Marie Eby, Donated by Cumberland Valley Relief Center
- 220 _____ LIGHTHOUSE WHOLE CLOTH (signed & dated)
92 x 105 Quilted by Cumberland Valley Relief Center, Donated by Janet Keener

- 221 _____ TAPESTRY (signed & dated)
94 x 100 Pieced by Sandi Layton, Quilted & Donated by
Cumberland Valley Relief Center
- 222 _____ LAYER CAKE (signed & dated)
43 x 62 Pieced by Brenda Lehman, Quilted by Susie DeVos,
Donated by Cumberland Valley Relief Center
- 223 _____ SPRING DREAMS (signed & dated)
62 x 86 Pieced by Jennifer Farney, Quilted & Donated by
Cumberland Valley Relief Center
- 224 _____ UNDER THE TREE (signed & dated)
34 x 39 Pieced & Donated by Susie DeVos, Quilted by Marie
Eby
- 225 _____ TREE OF LIFE
76 x 90 Donated by a Friend of Cumberland Valley Relief
Center
- 226 _____ BLUEBERRY CRUMB CAKE (signed & dated)
68 x 68 Pieced by the late Dorothy Crider, Quilted &
Donated by Cumberland Valley Relief Center
- 227 _____ VILLAGE SQUARE (preprint flower blocks, signed & dated)
98 x 98 Pieced by Karen Manderson, Quilted & Donated by
Cumberland Valley Relief Center
- 228 _____ DIAMOND JUBILEE
100 x 112 Pieced, Quilted & Donated by Hammer Creek
Mennonite Church Sewing Circle
- 229 _____ SNOWBALL (signed & dated)
60 x 74 Pieced & Donated by Susie DeVos, Quilted by
Cumberland Valley Relief Center
- 230 _____ TOPSY TURVY (signed & dated)
60 x 90 Pieced by Rachel Horst, Quilted & Donated by
Cumberland Valley Relief Center
- 231 _____ WASH DAY (signed & dated)
24 x 29 Pieced & Donated by Susie DeVos, Quilted by Fannie
Frey
- 232 _____ TRIP AROUND THE WORLD HEART (signed & dated)
93 x 96 Pieced by a Friend of Cumberland Valley Relief
Center, Quilted by Joyce Paylor, Donated by
Cumberland Valley Relief Center

Finding hope in buzzing and laughter

In Nicaragua, young entrepreneurs improve income and strengthen community relationships

What's that buzzing sound you hear on the hillsides of Boaco, Nicaragua? That would be 100 hives of bees that are helping Marcelo Paz García, his father and two brothers make an income. García's profit helps him eat healthier food and pay for university classes.

Those honey-makers produce 66-gallon barrels of the golden nectar that sell for \$820 each. In a year García and his family can sell 21 barrels, bringing in more than \$17,000. After paying expenses and building more hives, they are left with a modest monthly income, he says.

Their business has more than doubled from the 40 hives they had in 2019 when García took a small business and finance training for young adults



Marcelo Paz was able to increase his income by expanding his family's beekeeping business from 40 hives to 100 hives.

from Asociación Cristiana de Jóvenes de Nicaragua (ACJ-YMCA), a Mennonite Central Committee partner.

As part of that training, he could join a community savings and loan group, where he took out a low-interest loan. The money comes from people in his community, García included, who have decided to save money over a period of time and then lend it to each other.

And that's not the only buzz.

Participation in the savings groups builds relationships throughout the community, said Derrick Charles, MCC representative for Honduras and Nicaragua with his wife, Rebekah Charles from Lancaster, Pennsylvania.

“In addition to having more options for financial stability,” he said, “other angles that are really important to us include the innovation and creativity at work, and the community collaboration.

“These are new ways of working together in these communities. They meet regularly and define their own rules for how their group will run. They talk through what they're doing with their businesses and support one another's initiatives. The number of people participating in these groups has grown significantly in these recent years.”

The groups also try to take the sting out of community member's urgent needs. Each of the savings and loan groups sets aside part of the money to help with crises, such as funerals, sickness or even hurricane losses.

Story by Linda Espenshade | Photography: Derrick Charles



Learn more | mcc.org

- 233 _____ LONE STAR (signed & dated)
32 x 32 Pieced & Donated by Ruth Hoffeditz, Quilted by
Fannie Frey
- 234 _____ EVENING STAR VARIATION (signed & dated)
82 x 104 Pieced & Quilted by June Miller, Donated by June &
Tim Miller
- 235 _____ STORM AT SEA (signed & dated)
31 x 31 Pieced by Susie DeVos, Quilted by Fannie Frey,
Donated by Cumberland Valley Relief Center
- 236 _____ AT PIECE WITH TIME
69 x 81 Pieced by Kate Ruffennach & Nancy Cordell,
Appliqued by Anna Blanche Martin, Quilted &
Donated by Cumberland Valley Relief Center
- 237 _____ TWIRLING STARS (signed & dated)
62 x 72 Pieced Sandi Layton, Quilted & Donated by
Cumberland Valley Relief Center
- 238 _____ LANCASTER COUNTY ROSE (signed & dated)
88 x 104 Pieced & Appliqued by Debbie Funt, Quilted by
Cumberland Valley Relief Center, Donated by Jackie
Kreitzer
- 239 _____ LOVE BIRDS (signed & dated)
80 x 96 Pieced by a Friend of MCC, Quilted & Donated by
Cumberland Valley Relief Center
- 240 _____ DEAR FRIENDS (signed & dated)
16 x 19 Pieced & Donated by Susie DeVos, Quilted by
Thelma Martin
- 241 _____ PIONEER SAMPLER (signed & dated))
46 x 60 Pieced, Quilted & Donated by Susie DeVos
- 242 _____ CROSS STITCH STAR (small spot on front)
100 x 120 Quilted & Donated by Metzlers Mennonite Church
- 243 _____ BABY OWLS (signed & dated)
44 x 52 Pieced by Norma Huss, Quilted by Ruth Martin,
Donated by Cumberland Valley Relief Center
- 244 _____ HUNTER'S STAR
88 x 92 Pieced by Rachel Horst, Quilted by Path Valley
Amish, Donated by Cumberland Valley Relief Center

- 245 _____ Birds of a Feather (signed & dated)
20 x 25 Pieced, Quilted & Donated by Brenda Eby
- 246 _____ Ladies' Album (signed & dated)
70 x 80 Pieced by the late Dorothy Crider, Quilted &
Donated by Cumberland Valley Relief Center
- 247 _____ POTPOURRI (signed & dated)
49 x 60 Pieced by Sandi Layton, Quilted by Marie Eby,
Donated by Cumberland Valley Relief Center
- 248 _____ TRIP AROUND THE WORLD - two pillow shams included (signed & dated)
84 x 96 Pieced, Quilted & Donated by Tina Minder
- 249 _____ TRELIS GARDEN (spot on front, signed & dated)
78 x 78 Pieced by the late Dorothy Crider, Quilted by Cora
Horst, Donated by Cumberland Valley Relief Center
- 250 _____ LINES & CURVES (signed & dated)
84 x 102 Pieced & Quilted by June Miller, Donated by June &
Tim Miller
- 251 _____ TWINKLE TREES TABLE TOPPER (signed & dated)
36 x 36 Pieced by Joan Norcross, Quilted by Fannie Frey,
Donated by Cumberland Valley Relief Center
- 252 _____ CHRISTMAS TREE (hanging sleeve, signed & dated)
15 x 22 Pieced, Machine Stitched & Donated by Ruth
Runion Slear
- 253 _____ SMITTEN FOR SNOWMEN (hanging sleeve, signed & dated)
20 x 26 Pieced & Appliqued by Monna Gayman, Quilted by
Fannie Frey, Donated by Cumberland Valley Relief
Center
- 254 _____ RUDY REINDEER (hanging sleeve, signed & dated)
9 x 21 Pieced & Quilted by Sue Ann Sarvis, Donated by
Linda Breneman
- 255 _____ CHRISTMAS (signed & dated)
16 x 20 Pieced by Joan Norcross, Quilted by Marie Eby,
Donated by Linda Breneman
- 256 _____ SNOWBALL NINE PATCH (spot on front)
59 x 84 Donated by Nancy Ruiz

- 257 _____ MEANDERING (signed & dated)
26 x 32 Pieced by Brenda Eby, Quilted by Fannie Frey,
Donated by Cumberland Valley Relief Center
- 258 _____ STAR SAMPLER (machine quilted, signed & dated)
72 x 92 Pieced & Machine Quilted by Ann Grapes, Donated
by Doris Yoder
- 259 _____ COLOR SPLASH
92 x 104 Pieced by Pam Silverman, Quilted & Donated by
Material Resources Center
- 260 _____ ZIG ZAG
72 x 82 Pieced by Charlene Good, Quilted by Cumberland
Valley Relief Center, Donated by Cumberland Valley
Relief Center
- 261 _____ FRIENDSHIP STAR (signed & dated)
68 x 68 Pieced by Alice Whitehead, Quilted & Donated by
Cumberland Valley Relief Center
- 262 _____ DRESDEN PLATE (spots on front)
75 x 93 Pieced & Donated by Janet Stoops, Quilted by Path
Valley Amish
- 263 _____ PINWHEELS (signed & dated)
32 x 32 Pieced & Donated by Susie DeVos, Quilted by Marie
Eby
- 264 _____ FAMILY TIES (machine quilted)
33 x 36 Pieced by Jennifer Caplinger, Machine Quilted by
Karen Alderfer, Donated by Karen Alderfer & Jennifer
Caplinger
- 265 _____ NINE PATCH STAR FLOWER (machine quilted)
82 x 94 Pieced & Donated by Kathy Mast, Machine Quilted
by Starla Landis
- 266 _____ FLYING DONUTS (machine quilted)
57 x 72 Pieced by Jennifer Caplinger, Machine Quilted
by Karen Alderfer; Donated by Karen Alderfer &
Jennifer Caplinger
- 267 _____ HYDRANGEA (machine quilted)
80 x 100 Donated by a Friend of MCC

- 268 _____ TERRIFIC TRIANGLES
43 x 67 Pieced & Donated by Ann Grapes, Quilted by Susie DeVos
- 269 _____ LEMOYNE STAR (signed & dated)
44 x 44 Pieced by Karen Manderson, Quilted by Susie DeVos, Donated by Cumberland Valley Relief Center
- 270 _____ OCEAN WAVES (signed & dated)
82 x 100 Pieced by Charlene Good, Quilted & Donated by Cumberland Valley Relief Center
- 271 _____ BRIGHTLY WOVEN (faint spots on back, signed & dated)
47 x 66 Pieced by the late Dorothy Crider, Quilted by Susie DeVos, Donated by Cumberland Valley Relief Center
- 272 _____ AUTUMN COLORS
76 x 94 Pieced by Alice Stoltzfus, Quilted by Material Resources Center, Donated by Merlin & Alice Stoltzfus
- 273 _____ JUMP
23 x 53 Pieced & Appliqued by Barbara Parrish, Quilted by Marie Eby, Donated by Cumberland Valley Relief Center
- 274 _____ AUTUMN SPLENDOR
103 x 110 Pieced, Quilted & Donated by Martindale Sewing Circle
- 275 _____ STAR VARIATION (spots on back, signed & dated)
88 x 90 Pieced, Quilted & Donated by Ruth Hershey

SAVE THE DATE!
67th Pennsylvania Relief Sale
March 31 – April 1, 2023

QUILT AUCTION | SATURDAY

9–10 am | IN-PERSON BIDDING ONLY | Quilts #500-554

Location: Quilt Auction Area

- 500 _____ SCRAPPY TRIANGLES
28 x 33 Pieced, Quilted & Donated by Irene Shenk
- 501 _____ RED BIRDS (small spot on front, signed & dated)
46 x 46 Pieced & Embroidered by a Friend of Cumberland
Valley Relief Center, Quilted by Janet Crider,
Donated by Cumberland Valley Relief Center
- 502 _____ BLOOMS (machine quilted, signed & dated)
16 x 36 Pieced, Appliqued, Machine Quilted & Donated by
Ann Grapes
- 503 _____ JONQUILS (quilting lines smudged, signed & dated)
90 x 112 Pieced by Nancy Cordell, Quilted by Cora Horst,
Embroidered by Verna Mae Eby, Donated by
Cumberland Valley Relief Center
- 504 _____ ONE PATCH, FALL COLORS (hanging sleeve)
22 x 43 Donated by Joanne & Fred Stuebe
- 505 _____ KALEIDOSCOPE
58 x 78 Pieced, Quilted & Donated by Ann Grapes
- 506 _____ TEA TIME (signed & dated)
19 x 25 Pieced & Embroidered by a Friend of Cumberland
Valley Relief Center, Quilted by Marie Eby, Donated
by Cumberland Valley Relief Center
- 507 _____ CURVY LOG CABIN (signed & dated)
68 x 68 Pieced, Quilted & Donated by Rachel Smith
- 508 _____ UNDER THE SEA (signed & dated)
36 x 42 Pieced by a Friend of MCC, Quilted by Marie Eby,
Donated by Cumberland Valley Relief Center
- 509 _____ TRIP AROUND THE WORLD
45 x 52 Donated by Irene Shenk

- 510 _____ TEDDY BEAR (signed & dated)
45 x 52 Quilted by Janet Crider, Donated by a Friend of
Cumberland Valley Relief Center
- 511 _____ HEARTS & GIZZARDS
85 x 88 Pieced by Jane Sanders, Quilted by Path Valley
Amish, Donated by Susan Watts
- 512 _____ LOG CABIN (signed & dated)
40 x 55 Pieced by Barbara Parrish, Quilted by Marie Eby,
Donated by Cumberland Valley Relief Center
- 513 _____ BLUE & WHITE STAR TABLE RUNNER (signed & dated)
13 x 31 Pieced & Quilted by Anne Duvall, Donated by
Cumberland Valley Relief Center
- 514 _____ HEXI FLOWER GARDEN (machine quilted)
48 x 57 Pieced & Donated by Doris Whitmer
- 515 _____ TINY SQUARES (signed & dated)
20 x 20 Pieced & Donated by Susie DeVos, Quilted by Marie Eby
- 516 _____ STACK 'N WHACK (machine quilted)
24 x 58 Pieced, Machine Quilted & Donated by Joyce Busch
- 517 _____ TRIP AROUND THE WORLD
92 x 106 Pieced, Quilted & Donated Irene Shenk
- 518 _____ LITTLE TUMBLER (signed & dated)
14 x 19 Pieced by Monna Gayman, Quilted by Thelma
Martin, Donated by Cumberland Valley Relief Center
- 519 _____ RECTANGLES (signed & dated)
38 x 54 Pieced by a Friend of Cumberland Valley Relief
Center, Quilted by Nancy Cordell, Donated by
Cumberland Valley Relief Center
- 520 _____ SPRINGTIME BLOSSOMS (signed & dated)
44 x 44 Pieced by Joan Norcross, Quilted by Marie Eby,
Donated by Cumberland Valley Relief Center
- 521 _____ SPRING FLOWERS PREPRINT
80 x 98 Pieced & Quilted by Naomi Eby, Donated by Sharon
Eby
- 522 _____ HUNGRY CAT PREPRINT (signed & dated)
20 x 30 Quilted by Janet Crider, Donated by Cumberland
Valley Relief Center

- 523 _____ HUMMINGBIRDS (machine quilted, signed & dated)
 12 x 31 Pieced & Machine Quilted by a Friend of
 Cumberland Valley Relief Center, Donated by
 Cumberland Valley Relief Center
- 524 _____ RED & WHITE (signed & dated)
 33 x 43 Pieced by Charlene Good & Nancy Cordell, Quilted
 by Janet Crider, Donated by Cumberland Valley
 Relief Center
- 525 _____ JEWELS (machine quilted, signed & dated)
 17 x 17 Pieced, Appliqued & Machine Quilted by Ann Grapes,
 Donated by Cumberland Valley Relief Center
- 526 _____ SUNBURST (signed & dated)
 19 x 53 Pieced by Karen Manderson, Quilted by Marie Eby,
 Donated by Cumberland Valley Relief Center
- 527 _____ PUDDLE JUMPING (hanging sleeve, signed & dated)
 13 x 13 Pieced, Quilted & Donated by Linda Breneman
- 528 _____ SHOCK WAVES (signed & dated)
 58 x 84 Pieced by the late Dorothy Crider, Quilted &
 Donated by Cumberland Valley Relief Center
- 529 _____ PIECEFUL HOME
 10 x 39 Pieced, Machine Stitched & Donated by Ann Grapes
- 530 _____ SPIDER WEB
 40 x 40 Pieced & Donated by Fran Fitz Kennedy, Quilted by
 Marie Eby
- 531 _____ HALF SQUARE TRIANGLE CHALLENGE (hanging sleeve, signed & dated)
 13 x 15 Pieced, Quilted & Donated by Brenda Eby
- 532 _____ DELECTABLE MOUNTAIN (flannel front & back, signed & dated)
 48 x 52 Pieced by Karen Manderson, Quilted by Susie
 DeVos, Donated by Cumberland Valley Relief Center
- 533 _____ SARAH'S STORY (small spot on back, signed & dated)
 24 x 30 Pieced by Eileen Parsons, Quilted by Thelma Martin,
 Donated by Cumberland Valley Relief Center
- 534 _____ SCRAPPY SPRING (signed & dated)
 52 x 52 Pieced by a Friend of Cumberland Valley Relief
 Center, Quilted by Nancy Cordell, Donated by
 Cumberland Valley Relief Center

- 535 _____ SIGNALS (signed & dated)
56 x 68 Pieced & Donated by by Ann Grapes, Quilted by
Cumberland Valley Relief Center
- 536 _____ BOW TIES
15 x 18 Pieced & Donated by Susie DeVos, Quilted by Marie Eby
- 537 _____ SHOP HOP QUILT (signed & dated)
60 x 68 Pieced by the late Dorothy Crider, Quilted &
Donated by Cumberland Valley Relief Center
- 538 _____ DAISY CHAIN
54 x 58 Pieced & Donated by Lucy McAlose, Quilted by
Material Resources Center
- 539 _____ SEMINOLE TABLE RUNNER (signed & dated)
19 x 50 Pieced by Joan Norcross, Quilted by Fannie Frey,
Donated by Cumberland Valley Relief Center
- 540 _____ SNOWFLAKE (signed & dated)
48 x 49 Pieced, Quilted & Donated by Laura Miller
- 541 _____ SQUARE IN A SQUARE (signed & dated)
41 x 41 Pieced by Karen Manderson, Quilted by Nancy
Cordell, Donated by Cumberland Valley Relief Center
- 542 _____ SPOOLS
27 x 27 Pieced, Quilted & Donated by Anna Lauver
- 543 _____ PEPPERMINTS (signed & dated)
60 x 76 Pieced by Karen Manderson, Quilted & Donated by
Cumberland Valley Relief Center
- 544 _____ JANET'S CHOICE (preprint flower blocks, signed & dated)
39 x 51 Pieced by Karen Manderson, Quilted by Janet
Crider, Donated by Cumberland Valley Relief Center
- 545 _____ AMERICANA
18 x 27 Pieced & Embroidered by a Friend of Cumberland
Valley Relief Center, Quilted by Susie DeVos,
Donated by Cumberland Valley Relief Center
- 546 _____ CHRISTMAS WALL HANGING (machine quilted)
34 x 34 Pieced, Machine Quilted & Donated by Joyce Busch
- 547 _____ FAST & FLURRIOUS (signed & dated)
38 x 46 Pieced by Shirley Stoltzfus, Quilted by Marie Eby,
Donated by Cumberland Valley Relief Center

- 548 _____ AT THE CABIN (signed & dated)
14 x 28 Pieced by Karen Manderson, Quilted by Janet Crider, Donated by Cumberland Valley Relief Center
- 549 _____ 20 SQUARE POSTAGE STAMP
45 x 45 Pieced, Quilted & Donated by Emma Byler
- 550 _____ EIGHT POINTED STARS
52 x 70 Pieced & Donated by Doris Whitmer, Quilted by Material Resources Center
- 551 _____ ENGLISH GARDEN (signed & dated)
11 x 12 Pieced, Appliqued, Quilted & Donated by Brenda Eby
- 552 _____ SPLIT SQUARES (signed & dated)
30 x 30 Pieced by a Friend of Cumberland Valley Relief Center, Quilted by Marie Eby, Donated by Cumberland Valley Relief Center
- 553 _____ TANNENBAUM (signed & dated)
26 x 26 Pieced & Quilted by Anne Duvall, Donated by Cumberland Valley Relief Center
- 554 _____ ALPINE III (hanging sleeve, signed & dated)
20 x 24 Pieced, Quilted & Donated by Linda Breneman

Personalized Auction Service



Miller & Siegrist
Auctioneers LLC Lic. #AY002150

717-653-1575

MIKE MILLER & RHONDA NISSLEY

www.millersiegrist.com

Thank You for your Volunteer Services Today



**Leola Ambulance is now
New Holland Ambulance Association**

Serving the Leola and New Holland Communities

For Over 25 Years

Gratefully supporting the
 Pennsylvania Relief Sale

TCW·GAV

COMPUTER SYSTEMS **GLICK AUDIO & VIDEO**

GREAT SOLUTIONS **GREAT SUPPORT** **GREAT PEOPLE**

www.TCW-GAV.com
254 S Esbenshade Road
Manheim, PA 17545
717.653.2700



Craft Stand

Crafters committed to making and donating new quality items are the backbone of the Craft Stand. Customers will find a wide assortment of handmade items – pre-priced and ready for sale.

Items such as quilts, comforters, prayer shawls, hats, pillowcases, fabric books, kitchen towels, scrubbies, dishcloths, potholders, aprons, Christmas items, walker bags, lap robes, soap, candles, cross shoulder bags, totes, headbands, bookmarks, original note cards, original watercolors, and more!

The Craft Stand is located around the corner from the Quilt Display area.

Donations for next year's stand can be dropped off throughout the year at the Ephrata Material Resources Center (MRC), 517 W Trout Run Rd, Ephrata, or items may be brought to the Craft Stand on sale day.

Questions? Contact: Janet Runion Patton, Craft Stand Coordinator, 717-926-4008

Quilter's Attic

Since the last in-person PA Relief Sale in 2019, many quilters and friends of quilters have made donations to the Quilter's Attic for MCC. Items sold at Quilter's Attic at the 2019 Relief Sale raised over \$10,000. A stand-alone Quilter's Attic Sale took place in October 2021 at Groffdale Mennonite Church in Leola, Pa., and raised almost \$8,000. Many thanks to everyone who donated and who came to shop!

Check out the Quilter's Attic for lots of items for sale: fabric, notions, patterns, books, quilts, quilt tops, and many other quilting-related items. **One quilter's donation is another quilter's treasure!**

Quilter's Attic is located between the Quilt Auction seating and Quilt Display area.

Donations for the Quilter's Attic can be dropped off anytime throughout the year at the New Holland Re-Uzit store, located at 707 W. Main St., New Holland. Donation hours are Monday to Saturday from 9am to 4:30pm. All items **MUST BE MARKED "QUILTERS ATTIC."**

There may be a stand-alone Quilter's Attic Sale in October 2022 – check the PA Relief Sale website for details closer to the date: pareliefsale.org

Questions? Contact: Cathy Irwin, Quilter's Attic Coordinator, 717-254-6855
Contact Cathy to arrange donations in the Harrisburg area



MCC Relief Kits Reach Haiti

'Thank you for not leaving us alone' Canned meat, relief kits reach Haiti earthquake survivors

Boxes of canned meat and relief kits from Mennonite Central Committee (MCC) brought joy and relief to recipients who are struggling to recover from the Aug. 14, 2021 earthquake that devastated the southern peninsula of Haiti.

The supplies were the first of any to reach Saint-Jean-du-Sud, a southwestern municipality, made up of several towns, on Aug. 31, more than two weeks after the 7.2 magnitude earthquake occurred. Two thousand people died. It destroyed homes and buildings, leaving 650,000 people in need of emergency management assistance.

"Thank you for not leaving us alone," one woman told Paul Shetler Fast, MCC's health coordinator and former representative in Haiti who was present for the Aug. 31 distribution. "We've felt very alone these last days waiting after the earthquake, hoping someone would come, hoping someone would not forget us."

Relief organizations, including MCC, struggled to get supplies to people because the main road to the south was unsafe. Gang activity and robbery of supply trucks as well as tropical storm Grace, which came three days after the earthquake, kept trucks grounded.

Gradually police have been able to establish more security on the road, so two members of MCC's assessment team drove to Saint-Jean-du-Sud on Aug. 29 to help set up for the distribution.

And two days later MCC sent its first shipment and two more assessment team members by a Mission Aviation Fellowship (MAF) airplane. MAF provided its services free of charge.



Angie Mosie Bernard holds 12 cans of MCC canned meat. The earthquake badly damaged her family home.

Received by Earthquake Survivors

The distribution unfolded smoothly, Fast said, because MCC's partner AVOREDES was organized and prepared. Fifty families received a relief kit and 12 cans of meat, which represents the maximum the aircraft could hold.

AVOREDES chose the recipients whose homes were damaged or destroyed and were especially vulnerable in other ways. They included pregnant women, people with disabilities, and families headed by elderly persons or single women. About half were members of Mennonite churches in the area.

"All of them that we talked to mentioned, you know, a neighbor, who they knew was facing hard times – family member, cousin, someone who they knew needed help, who they would be sharing some of their cans with," Shetler Fast said. "We weren't telling them to do that. We weren't encouraging them to do that. But they said, 'You know, when God gives you a gift, then you give gifts to others.'"

Their generosity and compassion also sustained them before help arrived.

Story by Linda Espenshade | Photography: Paul Shetler Fast



An aircraft carried MCC's canned meat and relief kits to Saint-Jean-du-Sud, Haiti.

Learn more | mcc.org

SUPPORTERS

Heartfelt thanks to our loyal and generous supporters,
whose support and devotion contribute to the success
of the Pennsylvania Relief Sale.

A Friend of the PA Relief Sale .. Mechanicsburg, PA
Dan & Kelle Alonso..... Mechanicsburg, PA
Dan & Edie Asbury Mechanicsburg, PA
Duane & Joan Asper.....Enola, PA
Susan Bailey & Barb Klaiber.....Harrisburg, PA
Randall & Rebekah Basinger Dillsburg, PA
Ford & Patty Beardsley Dillsburg, PA
Dave & Patty Beasley Lemoyne, PA
Donna Bert..... Boiling Springs, PA
Harriet & Dale Bicksler Mechanicsburg, PA
Janet Crider Chambersburg, PA
Bob & Susan Felix..... Dillsburg, PA
David & Lanna Flowers..... Mechanicsburg, PA
Denise & Dale Fogelsanger Dillsburg, PA
In Memory of Jim Frandano ... Mechanicsburg, PA
David & Rita Frey Chambersburg, PA
Brantley & Katie Gasaway..... Mechanicsburg, PA
The Grindle Family..... Carlisle, PA
Robert & Judy Hamilton..... Mechanicsburg, PA
Niklas, Alison, Teodor, & AnneliMechanicsburg, PA
Joe & Patti Hess Mechanicsburg, PA
Louise Hunsecker Chambersburg, PA
Geoffrey & Dawn Isley Mechanicsburg, PA
Bob & Nancy Ives Dillsburg, PA
Merle & Rosie Kuhns Chambersburg, PA
Ray & Sharon Kuhns Chambersburg, PA
Rebecca Lehman..... Chambersburg, PA
Ted Long..... Dillsburg, PA
Dennis Mann Dillsburg, PA
Ken & Beth Mark..... Mechanicsburg, PA
Charlotte Martin Chambersburg, PA
David Henry & Janet Martin..... Shippensburg, PA
Doug & Kelly Martin..... Mechanicsburg, PA
Eugene & Vicki Martin..... Chambersburg, PA
Ken & Yvonne Martin Mechanicsburg, PA
Lloyd & Jane Martin Leola, PA
Phil, Kendra, Kellan,
& Brynn Martin Mechanicsburg, PA
David P. McBeth..... Mechanicsburg, PA
Ken & Lisa Sechrist Wellsville, PA
Jim & Jodie Smiley..... Mechanicsburg, PA
Rich & Kathy Stuebing..... Mechanicsburg, PA
Phil & Elaine Thuma..... Dillsburg, PA
Don & Karen Tucker Mechanicsburg, PA
Dave & Lori Warren..... Mechanicsburg, PA
Neil & Lisa Weaver..... Dillsburg, PA
Nelson & Joy Weaver.....Lititz, PA
Justin & Christina Weber..... Dillsburg, PA
Jeff & Carmen Williams Mechanicsburg, PA
John R & Anna M Yeatts..... Mechanicsburg, PA
David & Velma Yoder..... Mechanicsburg, PA
Marion & Eleanor Yoder..... Mechanicsburg, PA

P E N N S Y L V A N I A

RELIEF SALE

Celebrating Community. CREATING HOPE.

KOUNTRY KRAFT

EXCELLENCE IN CUSTOM-MADE CABINERY SINCE 1959



Design by Shawn Preis of Kountry Kraft | Courtney Apple Photography

291 South Sheridan Road Newmanstown, PA 17073
www.kountrykraft.com | (610) 589-4575 | PA003557

Triangle Communications

SECURITY & COMMUNICATIONS



Providing Solutions Since 1976

Triangle Communications offers:

- Mobile & Portable Two-Way Radios
- Radio Rentals • System Design
- Tower Site Rental • FCC Licensing
- Wireless Broadband • Industrial CCTV
 - Electronic Card Access
 - Photo ID Badging
- Synchronized Clock Systems
 - GPS Fleet Management
- School Bus Digital Video Systems



**We design, install and service
two-way radio, CCTV, & Access Control Systems**

– Free Estimates –

Locations in ► New Holland ► Harrisburg

1.800.828.7716

Real Life. Real Answers...

...for families like yours.

ENCOURAGEMENT. INSPIRATION. HOPE.

Focus on the Family | Money Wise | Odyssey
 Turning Point | Truth For Life | Focal Point
 Dr. James Dobson's Family Talk | The Alternative

www.wdac.com



The Voice of Christian Radio

www.hope945.com



Pennsylvania Relief Sale Board of Directors

John Beitler..... Kennett Square
 Dwayne Eby..... Chambersburg
 Sarah Geiling..... Mechanicsburg
 Dale Herr..... Lititz
 Dale Hershey..... Manheim
 Erin H. Hershey..... Lancaster
 David Huston..... Frazer
 Lois Huston..... Frazer
 Brad Immel..... Telford
 Genevie Kostick..... Souderton
 Mark Kostick..... Souderton

Diane Kropf..... Harleysville
 Ray Kuhns..... Chambersburg
 Linwood Landis..... Blue Ball
 Cloyd Martin..... Lebanon
 Kenneth Martin..... Mechanicsburg
 Lloyd Martin..... Leola
 Yvonne Martin..... Mechanicsburg
 Rhonda Nissley..... Mount Joy
 Steven Stoltzfus..... Bird-In-Hand
 Sharon Swartzentruber..... Sellersville
 Darrell Yoder..... Lancaster



MY
COINS
COUNT

**We can make a difference
in the world!**

Each year, spare change collected by churches and individuals adds up to more than \$600,000 for MCC.

To get involved as a congregation or community, visit mcc.org/my-coins-count to learn the song and start counting.



DRIVEN *by* Compassion



One of Goodville's Faith-Based Values

At Goodville Mutual we don't hide the fact we are a faith-based company that emphasizes doing business based on biblical principles like compassion.

We know that makes us different. We also believe that difference makes Goodville a better option for you.

 BUSINESS

 FARM

 HOME

 CHURCH

 AUTO



Goodville Mutual
Casualty Company

There's a lot of good in Goodville.

Visit goodville.com
to find an agent near you!